

Weekly Bulletin

23 June 2025 - 27 June 2025

Important Dates	
2 July	New Year 7 Induction Day & Welcome Event
4 July	Staff Training Day - School Closed
7 July	New Year 8-10 Sports Day
7-17 July	New Year 11 Work Experience
18 July	New Year 11 Work Experience Debrief & End of Summer Term
22-24 July	New Year 7 Summer School
21 August	GCSE Results Day
1 September	Start of Autumn Term & Staff Training Day - School Closed
2 September	Year 7 & Year 11 Start School
3 September	Years 8, 9 & 10 Start School
8 October	Year 7 Settling-in Evening & Open Evening
27-31 October	October Half-term

New Year 7 Induction Day & Welcome Event



HH Hodge Hill College
WEDNESDAY 2 JULY 2025
YEAR 7 INDUCTION DAY
09:00-14:45
Entry/Exit Point: Main Entrance

WELCOME EVENT
16:00-18:30
Entry/Exit Point: Main Entrance

0121 783 7807  www.hodgehill.bham.sch.uk

Useful Links



[Hodge Hill College](#)



[ParentPay](#)



[MyEd](#)



[Birmingham City Council](#)

MY Ed

Connecting parents, students and schools



Download our school app NOW

Step 1: Go to your app store

1



Step 2: Search for My Ed

2



My Ed

Step 3: Download the app

3

FREE
Download

Information about your student and school direct into your pocket.

95%

Attendance

Keep up to date with your child's attendance details.



Forms

Fill in forms securely on your app and return them directly to school.



Timetables

Get regular updates on timetables.



Key Dates

Important dates the school needs you to know.



News

Access the latest school news.



Info Packs

Digital information packs reduces time, hassle & paper.



GET THE APP HERE

SCAN ME



Find out more

www.myedschoolapp.com

Sports Day 2025



Hodge Hill College is hosting Sports Day 2025 on Monday 7 July, featuring a variety of competitive events including:

- 100m and 200m sprints
- Relay races
- Tug of war
- Javelin
- Shot put
- Long jump

Pupils are required to wear their full PE kit throughout the day and are encouraged to come ready to compete, support their form, and demonstrate their school spirit.

If your child has asthma, they must bring their inhaler with them. The event promises to be an exciting day of athletic competition and community engagement for the entire school.

New Year 9 HPV Vaccination

Pupils in New Year 9 will receive their HPV vaccine on 8 July 2025. The vaccinations will take place on school premises, and pupils will be required to attend school as usual. They will be called out of lessons for the vaccinations. Parents have been sent an email containing a letter with further information and a link to give consent.

Please use the link in the letter to inform the Birmingham School Age Immunisation Service (SAIS) team whether you wish for your child to receive the recommended vaccines or not.

Please note that only pupils with parental consent will be vaccinated.

If you need more information about the HPV vaccine, please visit [NHS - HPV Vaccine](#). If you need help or advice completing the consent form, please contact the Birmingham SAIS team on the phone at 0121 466 3410 or via email at bchnt.hpvtteamcentral@nhs.net.

Be a part of our Compass Community Birmingham!

Are you a parent or carer of a child who attends a school supported by Compass Birmingham Mental Health Support Team (MHST)?

Sign up today and be the first to get important updates, parenting tips and strategies and resources straight to your inbox



How it works:






1. Scan the QR code
2. Type in your name and email and click on subscribe
3. Check your inbox (or spam and junk folder) to confirm subscription.
4. If our emails go into your spam and junk folder, make sure to make us a safe contact so you don't miss any emails from us.
5. All done! You are now part of our Compass Community Birmingham

Scan me



Stay Connected!



-  birminghammhst@compass-uk.org
-  0121 227 8254
-  www.compass-uk.org
-  Instagram: @compassbmhst
-  Facebook: @compassbirminghamMHST

Your privacy matters

We will only use your email address to send you relevant updates and information. Your details will be stored securely in line with GDPR guidelines and will never be shared with third parties. You will also have the option to unsubscribe at any time.

[Sign Up](#)

Detentions

Hodge Hill College operates a detention system. If your child is late, misbehaves or doesn't hand in their homework on time, they will be given detention at lunchtime or up to 30 minutes at the end of the day. You will usually get a text or an in-app message on [MyEd](#) to inform you. Please ensure your contact details are up to date. For more serious matters, staff can issue an hour's detentions after school without giving parents/carers notice.

What the Law Allows

- Teachers have the power to issue detention to students (aged under 18)
- Schools must make clear to students and parents/carers that they use detention (including detention outside of school hours) as a sanction
- The times outside normal school hours when detention can be given (the 'permitted day of detention') include:
 - any school day where the student does not have permission to be absent
 - weekends - except the weekend preceding or following the half-term break
 - non-teaching days – usually referred to as 'training days', 'INSET days' or 'non-contact days'
- Parental consent is not required for detentions
- As with any disciplinary penalty, a member of staff must act reasonably given all the circumstances

The Government's summary on behaviour and discipline in schools can be read online at: <https://bit.ly/39yoRFb>.

Uniform & Standards

As part of the school's continued drive to improve standards, we would like all pupils to consistently adhere to the expectations on appearance, conduct and equipment. We are a professional environment and as such, we need all pupils to look smart, professionally conduct themselves and come equipped for their learning.

If a pupil does not meet the standards consistently, they will sit a 30-minute detention. We must have your support to raise our standards collectively. Please can we remind you that pupils are not permitted to wear nose studs and patterns and lines are not to be shaved into hairstyles or eyebrows.

If there are any problems in acquiring uniform, please contact the school and we will endeavour to work with you to address these issues. Such cases will be treated with due sensitivity and confidence.

Our full school uniform and PE kit list can be found at <https://www.hodgehill.bham.sch.uk/uniform>.

Year 11 After-school Tuition

We have introduced a comprehensive new tuition model to support Year 11 pupils' academic progress. Pupils requiring additional help are identified early through mock exams and subject-led assessments.

Teachers use focused tuition sessions to provide targeted support in small groups. There are dedicated after-school sessions each week for Maths, English, Science, and other core subjects. Those making significant progress can move out of the tuition program, while those who require further support may receive more intensive interventions with subject specialist teachers.

This multi-layered approach aims to collect and utilise data effectively, allowing teachers to adapt and personalise tuition to meet individual pupils' needs throughout the academic year.

This tuition timetable is available at <https://www.hodgehill.bham.sch.uk/tuition>.

Extra-curricular Activities & Clubs

At Hodge Hill College, our enrichment and extra-curricular provision provides our pupils with a breadth and balance of activities designed to broaden their horizons, allowing them to develop their own interests and talents. The programme is an extension of the school's curriculum and builds on our CARE brand whilst instilling British Values.

We offer quality provision which provides our pupils with a number of opportunities to develop their resilience, character and performance. Our sports provision has continued to improve to develop pupils physically and mentally.

Please note, that all pupils must sign in at reception upon arrival for before-school sessions each morning.

For more information and the activities timetable, please visit: <https://www.hodgehill.bham.sch.uk/extracurricular>.

FRIDAY
1ST
AUGUST 2025

COMPASS FUN DAY

WHAT TO EXPECT:

- Bracelet making
- Relaxation Corner
- Bollywood Dancing
- Face Painting
- Henna
- Football
- Raffle Draw and much more!



FREE
FOR ALL!

JOIN US FOR SOME FAMILY FUN!

11 AM - 3 PM

Dolphin Centre at Ward End
Park Rd, Birmingham B8 2HB

*Children must be accompanied by an adult.
Water will be provided!



FILM NEGATIVE



FILM NEGATIVE

Absence Reporting

If your child is going to be absent from school, please let us know before 08:30. You can do this by sending an in-app message (free of charge) to the Absence Hotline via our MyEd app or calling 0121 783 7807.

Parents/Carers may be asked to provide medical evidence where there are repeated absences due to reported illness.

Punctuality

All pupils must arrive on time each day to run the school efficiently. Pupils are expected to be on school premises by 08:30.

Any pupil who arrives after 08:40 will be considered late and marked accordingly by the staff members present at the gates. The main school gates will close at 08:40, and any pupil who arrives after this time will need to sign in via the School Office.

If a pupil is late for school, they will receive a 30-minute detention on the same day. Similarly, if a pupil is late for a lesson, they will receive a 30-minute detention on the same day. If a pupil is marked late more than once in a day, the detention time will be increased on the same day.

Learning Wallets, School Bags & Equipment

All pupils have been given a learning wallet containing the equipment they need to bring to school to support their access to the curriculum. This needs to be brought into school every day in a school bag to ensure it is kept safe. Pupils without a bag have been provided with one. Failure to bring in the learning wallet or school bag will result in a 60-minute detention.

If pupils lose any of their equipment, they are responsible for replacing it. Stationery items are available for purchase at both canteens for a nominal amount of 10p per item (cash).

If your child needs to replace their calculator, you can either provide one or purchase a new one through ParentPay/the School Office for £15 (cashless).

Empty learning wallets are also available to purchase through ParentPay/the School Office for £1.70 (cashless).

School Policies & Documents

Parents can access the school's policies and documents via the school's website at [Hodge Hill College - Policies](#).

Parents can view the school's stance on prominent issues that may affect their child and see the codes of conduct that their child should adhere to as a member of the school student body.

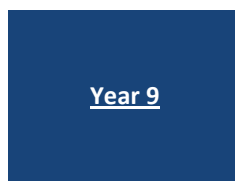
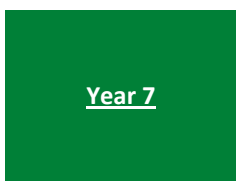
Personal Development Curriculum

As a part of your child's education at Hodge Hill College, we promote personal well-being and development through a comprehensive Personal, Social, Health and Economic (PSHE) education programme.

PSHE education is the curriculum subject that gives young people the knowledge, understanding, strategies and practical skills to live safe, healthy, productive lives and meet their full potential.

Our PSHE programme is delivered through form-time activities to all year groups and through our Personal Development weekly lessons to pupils in Years 7, 8 and 9.

Please note, that the pages linked below are updated with resources regularly.



What Parents & Educators Need to Know about GENERATIVE AI SAFETY

Generative AI tools – such as ChatGPT – are now commonly used by children. In fact, 3 in 4 pupils in the 2024 Annual Literacy Survey reported using generative AI, up from just 2 in 5 the previous year. While these tools can boost learning and creativity, they also raise concerns around misinformation, privacy and overuse. This guide explores the key risks and how to support safe use.

WHAT ARE THE RISKS?

MISINFORMATION AND ACCURACY



Generative AI can sometimes produce false or misleading content. Children – and even adults – may assume the information is accurate and trustworthy. This can affect learning and understanding of important topics. It's vital to teach children to critically assess all information, even when it comes from AI.

EXPOSURE TO INAPPROPRIATE CONTENT

Because generative AI is trained on vast datasets from across the internet, there is a chance it may occasionally generate harmful or inappropriate content. Without supervision, children could encounter disturbing or unsuitable material. Active monitoring and clear usage boundaries can help reduce this risk.

PRIVACY AND DATA SECURITY

Some AI tools ask for personal details or store users' interactions. If privacy settings are not correctly configured, children's personal data could be exposed or misused. Teaching good digital hygiene and setting strong privacy controls is essential for protecting children online.

REDUCED CRITICAL THINKING



Relying too heavily on AI-generated responses may reduce children's willingness to think independently. If they consistently use AI to solve problems or complete tasks, it could impact their ability to reason, analyse and form their own ideas. Encouraging thoughtful reflection is key.

DIGITAL DEPENDENCY

Regular use of generative AI can contribute to increased screen time and less real-world interaction. If left unmanaged, it may affect physical activity levels, sleep, and social development. Striking a healthy balance between online and offline activities is important for wellbeing.

UNCLEAR ETHICAL BOUNDARIES



Children may not fully understand the ethical implications of using AI to complete homework or creative tasks. This can lead to unintentional plagiarism or dishonest academic practices. Conversations around responsible use and academic honesty are crucial.

Advice for Parents & Educators

ESTABLISH CLEAR GUIDELINES

Set clear, age-appropriate rules for when and how generative AI can be used. Reinforce these regularly to help children develop a healthy, respectful and informed relationship with the technology.



ENCOURAGE CRITICAL EVALUATION

Help children to question the accuracy of AI-generated information and seek out additional trusted sources. This builds essential digital literacy skills and supports better decision-making.



PROMOTE ACTIVE SUPERVISION

Keep an eye on how the children in your care use AI tools. Check in regularly to ensure they're using them appropriately and be ready to step in if something doesn't feel right.



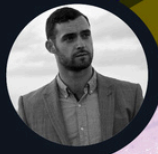
ENHANCE PRIVACY AWARENESS

Talk to children about the importance of keeping personal information private. Make sure privacy settings are in place and explain how data shared with AI tools could be used.



Meet Our Expert

Brendan O'Keeffe, Deputy Headmaster and Director of Digital Strategy at Eaton House Schools, has extensive expertise in digital safety, safeguarding, and generative AI in education. As an author and speaker on digital literacy and online safety for institutions such as The National College, Brendan guides parents and educators in creating safe digital learning environments.



#WakeUpWednesday

The National College

ParentPay

ParentPay enables parents/carers to make secure payments for their child's lunches and school trips.

ParentPay Activation

When pupils join Hodge Hill College, parents/carers are issued with a ParentPay Activation Letter that contains a temporary ParentPay username and password. As part of the account activation, the parent/carer will need to choose an email address and new password to use with ParentPay. Parents/carers should follow the instructions in the letter, and on www.parentpay.com to successfully activate their account. If you have more than one child at our school or have children in other schools that use ParentPay, you can create a single account to manage them all.

Forgotten Password

If a parent/carer can't get into their ParentPay account, they should go to www.parentpay.com > For Parents > Parent Login, and click on the "Forgotten password" link. Parents/carers should not need to contact school to regain access to ParentPay accounts.

Outstanding Balances

If you have an unpaid balance on your child's ParentPay account, we kindly request you to settle it as soon as possible by logging into your account. Your child will need to bring their own packed lunch and they will not be able to use the school canteen until the account is topped up and the debts have been cleared.

If you need help with adding credit to the account, please visit the School Office with your debit card.

FAQs & More Information

- FAQs: www.hodgehill.bham.sch.uk/parentpay
- More information: www.parentpay.com
- Call the School Office: 0121 783 7807

Free School Meals

Who is eligible for Free School Meals?

Your child may be able to get free school meals if you get any of the following:

- Income Support
- income-based Jobseeker's Allowance
- income-related Employment and Support Allowance
- support under Part VI of the Immigration and Asylum Act 1999
- the guaranteed element of Pension Credit
- Child Tax Credit (provided you're not also entitled to Working Tax Credit and have an annual gross income of no more than £16,190)
- Working Tax Credit run-on - paid for 4 weeks after you stop qualifying for Working Tax Credit
- Universal Credit - if you apply on or after 1 April 2018 your household income must be less than £7,400 a year (after tax and not including any benefits you get)

Apply for Free School Meals

We encourage you to apply for Free School Meals through the online service found on our website: www.hodgehill.bham.sch.uk/freeschoolmeals. You can also telephone (0121 783 7807) or come into school and complete a Free School Meals application online with a member of staff if you prefer.

Please make sure you have the National Insurance Number with you for the named person who receives either working tax credit/child tax credit and we will be happy to help.

Weekly Lunch Menu

The school lunch menus are available to view online and provide an overview of the menu items that will be served each day: <https://www.hodgehill.bham.sch.uk/lunch>.





**DONATIONS
WELCOME**

HH Hodge Hill College

Food Bank

BE PART OF OUR HELPING HANDS

**OPEN EVERY THURSDAY FROM
3:10PM TO 3:30PM
IN THE STUDIO**

0121 783 7807

HOUSEHOLDSUPPORT@HODGEHILL.BHAM.SCH.UK

**TO REQUEST SUPPORT, KINDLY COMPLETE
AND SUBMIT THIS FORM: [HTTPS://BIT.LY/3UXZI4X](https://bit.ly/3UXZI4X)**

Zero Tolerance

Please note that Hodge Hill College operates a zero-tolerance policy about verbal and physical aggression.

If you become abusive towards a member of staff, we will need to:

- Close down any conversation and not speak with you any further
- Ask you to leave and come back another time
- If necessary, call the police for assistance

Please be respectful of our staff in the School Office team. They will do their best to help you but in a large school with several buildings, over 150 members of staff, and approximately 1200 pupils, they may not always be able to find out what you want to know or locate a member of staff immediately, so please be patient.

Is my child too ill for school?

We know that, at certain times of the year, children pick up bugs and illnesses. However, please remember that children can come to school with some illnesses if they feel well enough. NHS guidance is available at <http://bit.ly/3hD7ryQ>.

Medical Appointments During the School Day

In order to ensure that your child's learning is not disrupted, it is strongly recommended that non-urgent GP, dentist, or optometrist appointments are scheduled outside of school hours.

If your child has a hospital appointment or requires specialist medical care, please inform the school in advance. You can do so by sending a photo of the appointment letter via MyEd or by submitting it in person to the School Office. A copy of the letter will then be sent to your child's AC and AAC to authorise the absence.

Medication

As a parent or carer, it is your responsibility to provide the school with accurate and updated information regarding your child's medical needs. You should also be involved in developing and reviewing your child's individual healthcare plan.

If your child has any medical needs or needs to take medication during school hours, please visit the School Office to complete a Parental Medical Consent Form and drop off any medication that needs to be kept in school.

If your child has asthma, we highly recommend that they always carry an inhaler with them. Please provide us with an inhaler by dropping it off at the School Office in case of any emergencies, and completing the consent form.

Contact Details

Please remember to inform the school of any changes to your contact details.

This is important because we may need to contact you if your child is injured or taken ill, to provide you with information about trips and closures or to send you reminders and cancellations of any event.

Please update and submit any new details via the Change of Pupils Details Form on the MyEd app. Alternatively, you may visit the School Office to complete an electronic/paper copy of the form.

Confiscated Items

If a pupil has an item confiscated, their parents/carers can pick it up from the School Office after school on the same day between the following times:

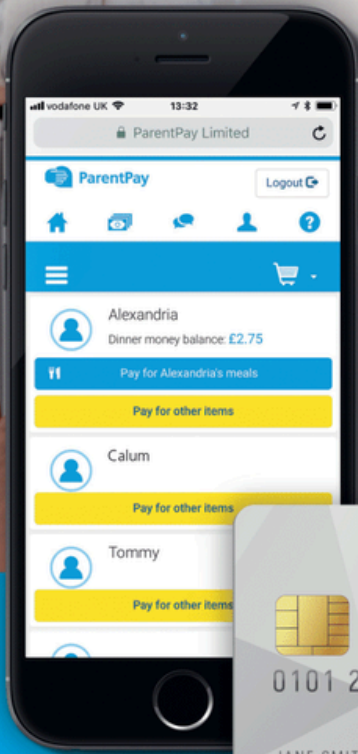
- Monday: 16:10-16:45
- Tuesday to Thursday: 15:10-16:00
- Friday: 13:40-14:30

If parents/carers cannot collect it on the same day, they must pick it up on another day after school. Pupils are not permitted to collect the item.

THE EASY WAY TO PAY

We're using ParentPay so parents can easily pay online for school dinners, trips and clubs.

No stress, hassle free.



**SIMPLE
QUICK
SAFE**



www.parentpay.com



ParentPay
COUNT ON US

VISA

VISA Checkout



Key Stage 3 Assessment and Core Vocabulary Booklets

The spring term's assessment and core vocabulary booklets are linked below. These booklets feature key vocabulary that pupils will learn this term, along with definitions. They are organised by subject area for easy reference. This will support pupils in their comprehension and language development.



Curriculum Handbook

You can find detailed information about the curriculum and the specific subjects and skills your child will be learning each year by visiting the following link: <https://tinyurl.com/ch14jan25>.

Our Community and the Cost of Living

Now more than ever, with the rising cost of living, many families are feeling the squeeze. As a school, we are actively seeking to do whatever we reasonably can to support our students and their families with these rapidly growing pressures.

We are continuing to open West Canteen to pupils every morning before school between 8:00am and 8:30am to provide a free breakfast including toast and hot drinks. Please encourage your child to attend this, particularly if they arrive early to school in the morning, as it is a supervised space with access to games and other activities.

If you are facing particular hardships, please feel free to get in touch with us here at Hodge Hill College at householdsupport@hodgehill.bham.sch.uk. All requests will be treated with the utmost confidentiality and we will look at what support we are able to practically provide.

Further information about support being provided by Birmingham City Council for the cost of living crisis can be found on <https://www.birmingham.gov.uk/livingsupport> and this may be of use to you in signposting where you can get help, support, and advice if you are affected.

We have a second-hand store of pre-loved uniform items, all washed and ready if you need them. Please get in touch with the school at the email address above if you would like to take advantage of this.

Uniform Donations

Throughout the year, we kindly request your help in supporting other families in need. If your children have outgrown their old school uniforms, please consider donating them to the School Office. We will collect all donated uniforms and distribute them to pupils who would greatly benefit from them. Even a single donated item can make a significant difference.

We are happy to accept donations of new uniforms too. Whether gently used or brand new, your contributions are greatly appreciated.

Please make sure to wash any used uniforms before donating and ensure they are in good condition. You can send the uniforms with your child or drop them off at the School Office yourself. We appreciate anything you can provide to help clothe and equip pupils whose families are facing financial difficulties.

Together, we can ensure that all our students feel comfortable, confident, and ready to learn.

**MOMENTS
MATTER,
ATTENDANCE
COUNTS.**

Penalty Notices

From 19 August 2024, the new National Framework for issuing penalty notices will apply.

National Threshold

There will be a single consistent national threshold to consider if a Penalty Notice must be considered by all schools in England of 10 sessions (usually equivalent to 5 days) of unauthorised absence within a rolling 10-school week period.

These sessions do not have to be consecutive and can be made up of a combination of any type of unauthorised absence.

The 10-school week period can span over different terms and school years.

Penalty Notice Fines will continue to be issued per parent per child.

Example: 2 parents with 3 children would receive a total of 6 Penalty Notices

1

First Offence

- £100 per parent, per child paid within 28 days
- Reduced to £60 per parent, per child if paid within 21 days
- Unpaid Penalty Notices after 28 days may result in a prosecution

2

Second Offence (within 3 years of the First Offence)

- Where it is deemed appropriate to issue a second Penalty Notice to the same parent for the same pupil within 3 years of the first notice
- £100 per parent, per child paid within 28 days
- Unpaid Penalty Notices after 28 days may result in a prosecution

3

Third Offence and any further offences (within 3 years of the First Offence)

- The third time that an offence is committed for either a term time holiday and/or irregular attendance, a Penalty Notice will not be issued, the case may be proceeded straight to prosecution under the Education Act 1996, Section 444
- If found guilty of the offence of "failure to secure their child's regular attendance at a school" the Magistrates can impose a fine of up to £1,000 and you will have a criminal record

Please Note

If you take any Leave of Absence PRIOR to 19 August 2024 (e.g. in July 2024) then the Penalty Notice will be at the old rate of £60/£120. Any Leave of Absence taken in or after September 2024 will be charged at the new rates as above.

Translate Our School Website Using Google Translator on Chrome

If you need help understanding information on our school's website, Google Chrome has a built-in translation feature that can translate the pages into your preferred language.

To use this, first make sure you have the latest version of Google Chrome installed on your device. Then navigate to our school's website and click on the three-dot menu icon in the top right corner of Chrome. Select **"Translate"** from the menu. This will bring up a sidebar where you can choose which language you want to translate the page into. Click on your desired language and Chrome will automatically translate everything on the webpage.

The translation may not be completely perfect, but it should help convey the key information and allow you to understand important updates from teachers or the school administration.

This feature works for dozens of popular languages - just select the one you feel most comfortable with.

Examples:

Arabic



Bangla



Chinese



Romanian



Polish



Urdu



Homework - Useful Links



[SAM Learning](#)



[ClassCharts](#)



[MathsWatch](#)



[My GCSE Science](#)



[myON](#)



B.Y.O.B

BRING YOUR OWN BOTTLE

As part of our move towards sustainability, single-use plastic cups are no longer available in school.

All pupils must take responsibility for bringing in their own reusable water bottles.

Reusable water bottles are available to purchase from West Office using money on ParentPay.

