

Weekly Bulletin

30 January 2023 - 3 February 2023

Important Dates

7-8 February: Year 11 Hospitality Practical Assessment
8 February: Year 9 Parents' Evening | 16 February: Year 9 HPV & SLB Immunisations | 20-24 February: Half-term
6-10 March: Year 11 Spring Mock Exams | 3-14 April: Easter Holidays

School Office & Telephone Line Opening Hours (Term Time Only)

A polite reminder of our School Office opening hours:

- Monday to Thursday: 8:00am-4:45pm
- Friday: 8:00am-2:30pm

Our phone lines are open during these hours except on a Friday when the lines close at 3pm.

Any confiscated items must be collected on a Friday between between 12:30pm and 1:30pm.

Year 9 Parents' Evening



HH Hodge Hill College

YEAR 9
PARENTS' EVENING
Wednesday 8 February 2023
3:30pm-6:30pm

0121 783 7807  www.hodgehill.bham.sch.uk

Parents' Evening is very important for all parents/carers, students and teachers. The evening will provide teachers with an opportunity to discuss your child's academic progress and crucially give advice on suggested next steps to secure further improvements.

We place a huge emphasis on working in partnership with families and, therefore, you must take this opportunity to discuss with teachers how your child is performing in relation to their potential and what could be done together to further support your child.

All students will be given their report during the evening and this should form the basis for discussion around attainment and effort. Teaching staff will be available from 3.30pm and 6.30pm to meet with you.

Please note: if you wish to see all of your child's teachers, please allow at least an hour and a half and arrive no later than 5.00pm.

Safer Internet Day

Ahead of Safer Internet Day on 7 February 2023, please watch this film for parents/carers: <https://bit.ly/3DymTUW>.



B.Y.O.B

BRING YOUR OWN BOTTLE

As part of our move towards sustainability, after the February half-term single-use plastic cups will not be available in school.

All pupils will need to take responsibility for bringing in their own reusable water bottle.

Social, Emotional and Mental Health Questionnaire

Inside the attached link <https://forms.gle/kSRvBRuTKkZjaqzG7>, is a parental questionnaire regarding SEMH (social, emotional and mental health) issues that can affect young people. Working in partnership with Birmingham City Council, the school wants to continue to address SEMH issues for young people and improve the support services within our communities. In advance, we really appreciate your time in completing the questionnaire.

Trip to Manchester City vs Newcastle United (Premier League Fixture)


The PE department are running a trip for students to watch the Premier League fixture between Manchester City and Newcastle. All details about this trip can be found on <https://bit.ly/3Y5XVUz> and ParentPay. There is now also an option to pay in two instalments. If you wish to do this, please ask your child to contact Mr Stewart to organise this.

www.ditchthelabel.org

Ditch the Label is a global youth charity and for over 10 years, they have been on a mission to help young people overcome the issues that affect them the most; bullying, mental health, relationships, identity or the tough stuff in-between. They provide digital safe spaces, direct support, education, campaigns and world-class research.

Here are some articles from their support hub:

 [BULLYING: HOW TO USE MINDFULNESS TO PROTECT YOURSELF FROM THE EFFECTS OF BULLYING](#)

 [MENTAL HEALTH: 4 WAYS TO GROUND YOURSELF IF YOU ARE STRESSED](#)

 [SELF-HELP: 5 GAMING SKILLS THAT WILL MAKE YOU SUCCESSFUL IN THE 'REAL' WORLD](#)

Year 10 After School Tuition

Year 10 after school tuition will run on the following Tuesdays from 2:40pm to 3:30pm:

- Tuesday 31 January 2023: English Literature - Year 10 West Groups Only
- Tuesday 7 February 2023: English Literature - Year 10 East Groups Only

Year 11 After School Tuition

Year 11 after school tuition will run every Thursday from 2:40pm to 3:30pm in the spring term:

- Thursday 5 January 2023: History Geography & Creative Design
- Thursday 12 January 2023: Computer Science & Science
- Thursday 19 January 2023: Health and Social Care, French, RE & PE
- Thursday 26 January 2023: Maths (East) & English (West)
- Thursday 2 February 2023: English (East) & Maths (West)
- Thursday 9 February 2023: History, Geography & Creative Design
- Thursday 16 February 2023: Computer Science & Science
- Thursday 2 March 2023: RE, French & PE
- Thursday 9 March 2023: No Tuition
- Thursday 16 March 2023: Maths (East) & English (West)
- Thursday 23 March 2023: English (East) & Maths (West)
- Thursday 30 March 2023: PE, Computer Science & Science

Useful Links



[Hodge Hill College](#)



[ParentPay](#)



[MyEd](#)



[Birmingham City Council](#)

Medical Appointments During the School Day

To ensure your child does not miss out on learning, we strongly advise that non-urgent appointments at the GP, dentist or optometrist are made out of school hours.

If your child has a hospital or specialist appointment, please notify the school in advance. You may do this by sending a photo of the letter via MyEd or bring it to the School Office where a copy will be sent to your child's AC and AAC for authorisation.

Year 9 HPV & SLB Vaccinations

Pupils in Year 9 will be receiving their HPV (second dose) & SLB vaccines on Thursday 16 February 2023. For more information on each vaccine, please visit:

- HPV: <https://www.nhs.uk/conditions/vaccinations/hpv-human-papillomavirus-vaccine/>
- SLB: <https://www.nhs.uk/conditions/vaccinations/3-in-1-teenage-booster/>

Pupils were offered their first dose of the HPV vaccine in Year 8. The vaccinations will take place in school. Pupils will be required to attend school as normal and will be called out of lessons for vaccinations. The SLB consent forms are due in by Monday 30 January 2023. Only pupils with parental consent will be vaccinated.

Should you have any questions or would like further information, please contact the Immunisation Team on 0121 466 3460.

Medication

It is the responsibility of parents/carers to provide the school with sufficient and up-to-date information about their child's medical needs and be involved in developing and reviewing their child's individual healthcare plan.

If your child has any medical needs or is required to take medication during school hours and you are yet to inform us of them, please visit the School Office to complete a Parental Medical Consent Form and drop off any medication you would like us to keep in school.

If your child has asthma, we advise that they always carry an inhaler on them. Please drop an inhaler at School Office for us to keep in case of emergency and complete the consent form.

Detentions

Hodge Hill College operates a detention system. If your child is late, misbehaves or doesn't hand in their homework on time, they will be given detention at lunchtime or up to 30 minutes at the end of the day. You will usually get a text or an in-app message on MyEd to inform you. Please ensure your contact details are up to date. For more serious matters, staff can issue an hour's detentions after school without giving parents/carers notice.

What the Law Allows

- Teachers have the power to issue detention to students (aged under 18)
- Schools must make clear to students and parents/carers that they use detention (including detention outside of school hours) as a sanction
- The times outside normal school hours when detention can be given (the 'permitted day of detention') include:
 - any school day where the student does not have permission to be absent
 - weekends - except the weekend preceding or following the half-term break
 - non-teaching days – usually referred to as 'training days', 'INSET days' or 'non-contact days'
- Parental consent is not required for detentions
- As with any disciplinary penalty, a member of staff must act reasonably given all the circumstances

The Government's summary on behaviour and discipline in schools can be read online at: <https://bit.ly/39yoRFb>.

Homework - Useful Links



[ClassCharts](#)



[MathsWatch](#)



[MY GCSE Science](#)



[myON](#)

ParentPay

Cashless Payments

We operate a biometric cashless catering system in school. In addition to school meals, we do not accept cash payments for trips or uniform (ties, badges and hijabs).

Activation

If you are yet to activate your ParentPay account, please do so as soon as possible. If you would like another copy of the activation letter with your username and password, please call us on 0121 783 7807 or send a message via MyEd.

Outstanding Balances

If you have an outstanding balance on ParentPay for your child, we would appreciate if you could arrange for it to be paid immediately by logging into your account.

If you would like assistance with activating your account or adding credit, please visit the School Office between the following times (term-time only) along with your debit card:

- Tuesday to Thursday: 3:00pm-4:00pm

Zero Tolerance

Please note that Hodge Hill College operates a zero tolerance policy with regard to verbal and physical aggression.

If you become abusive towards a member of staff, we will need to:

- Close down any conversation and not speak with you any further
- Ask you to leave and come back another time
- If necessary, call the police for assistance

Please be respectful of our staff in the School Office team. They will do their best to help you but in a large school with several buildings, over 150 members of staff, and approximately 1200 pupils, they may not always be able to find out what you want to know or locate a member of staff immediately, so please be patient.

Uniform & Standards

As part of the school's continued drive to improve standards, we would like all pupils to consistently adhere to the expectations on appearance, conduct and equipment. We are a professional environment and as such, we need all pupils to look smart, professionally conduct themselves and come equipped for their learning.

If a pupil does not meet the standards consistently, they will sit a 30-minute detention. We must have your support to raise our standards collectively. Please can we remind you that pupils are not permitted to wear nose studs and patterns and lines are not to be shaved into hairstyles or eyebrows.

If there are any problems in acquiring uniform, please contact the school and we will endeavour to work with you to address these issues. Such cases will be treated with due sensitivity and confidence.



Next Week's Lunch Menu


Lunch week 2

All our ingredients are locally sourced and delivered fresh by local suppliers. Our eggs are free-range and Red Lion stamped, our fish is sustainably sourced and MSC approved and our meat is British Red Tractor accredited wherever possible.

	MONDAY	TUESDAY	WEDNESDAY	THURSDAY	FRIDAY
MAIN MEAL From £1.90	LAMB BURGER N A BUN	BEEF BURRITOS	HOMEMADE BEEF LASAGNE	CHICKEN CHOW MEIN	FISH CAKES SERVED WITH SWEET CHILLI SAUCE
PLANT BASED / VEGETARIAN From £1.90	CHEESE & ONION PASTY	VEGETABLE QUESADILLAS	MAC & CHEESE	VEGETABLE SAMOSA WITH YOGURT & MINT SAUCE	VEGGIE SAUSAGE ROLL
ALL SERVED WITH SEASONAL VEGETABLES & POTATO OR RICE DISH OF THE DAY					
STREET FOOD FROM £2.35	HOT SPICY CHICKEN PANINI	CHICKEN THIGH BURGER	CHICKEN GOUJONS IN NAAN BREAD	SPICY LAMB WRAP	TANDOORI CHICKEN WRAP
TAKEAWAY TUBS FROM £1.75	Nachos & Cheese				
	PIRI PIRI WINGS	CRISPY FISH TACO	CAJUN WINGS	FISH FINGER WRAP	BBQ WINGS
PIZZA SLICE FROM £1.45	MARGHERITA	MARGHERITA & BBQ CHICKEN	MARGHERITA & HOT CHICKEN	TOMATO, CHILLI, MOZZARELLA HOT MARGHERITA	MARGHERITA & BBQ CHICKEN
JACKETS From 0.95p	TRY OUR DELICIOUS FILLINGS FOR 35p EACH				
DESSERTS 0.95p	JAM & COCONUT SPONGE	STICKY TOFFEE APPLE	STRAWBERRY CHEESE CAKE	LEMON DRIZZLE CAKE	CHOCOLATE BROWNIE

Meal Deal

Main Meal With Vegetables And Dessert



£2.40

All Of Our Main Meals, Sandwiches & Desserts Are Freshly Made On Site Every Day

Free School Meals

Who is eligible for Free School Meals?

Your child may be able to get free school meals if you get any of the following:

- Income Support
- income-based Jobseeker's Allowance
- income-related Employment and Support Allowance
- support under Part VI of the Immigration and Asylum Act 1999
- the guaranteed element of Pension Credit
- Child Tax Credit (provided you're not also entitled to Working Tax Credit and have an annual gross income of no more than £16,190)
- Working Tax Credit run-on - paid for 4 weeks after you stop qualifying for Working Tax Credit
- Universal Credit - if you apply on or after 1 April 2018 your household income must be less than £7,400 a year (after tax and not including any benefits you get)

Apply for Free School Meals

We encourage you to apply for Free School Meals through the online service found on our website: www.hodgehill.bham.sch.uk/freeschoolmeals. You can also telephone (0121 783 7807) or come into school and complete a Free School Meals application online with a member of staff if you prefer.

Please make sure you have the National Insurance Number with you for the named person who receives either working tax credit/child tax credit and we will be happy to help.

FREE TO
ANYONE
AGED
11-17

WEDNESDAY FOOTBALL SESSIONS

JOIN US EVERY WEDNESDAY
16:00 - 17:00

Hodge Hill College, 3G Pitch, Bromford Road,
Birmingham, B36 8HB

With a special visit from the West Midlands mayor,
Andy Street, on the 21st September!

DEVELOP SKILLS. MEET NEW PEOPLE. PLAY & ENJOY.



Fill your street with friendliness®



www.as-one.uk/birmingham

as one[®]

Local communities
in partnership with

Birmingham
City Council

10 MENTAL HEALTH TIPS FOR PARENTS



Listen to what your child has to say. Be patient and understanding with them



Encourage communication and talking openly. Support your child in talking about their feelings



Support your child in problem solving when they experience worries. Help them to find solutions

Engage in some coping skills with your child (I.e. relaxation or deep breathing)



Encourage your child to interact with friends and family and to connect with others

Make sure your child knows that you will be there for them



Don't struggle in silence. If you need extra help go to your doctor or a mental health charity

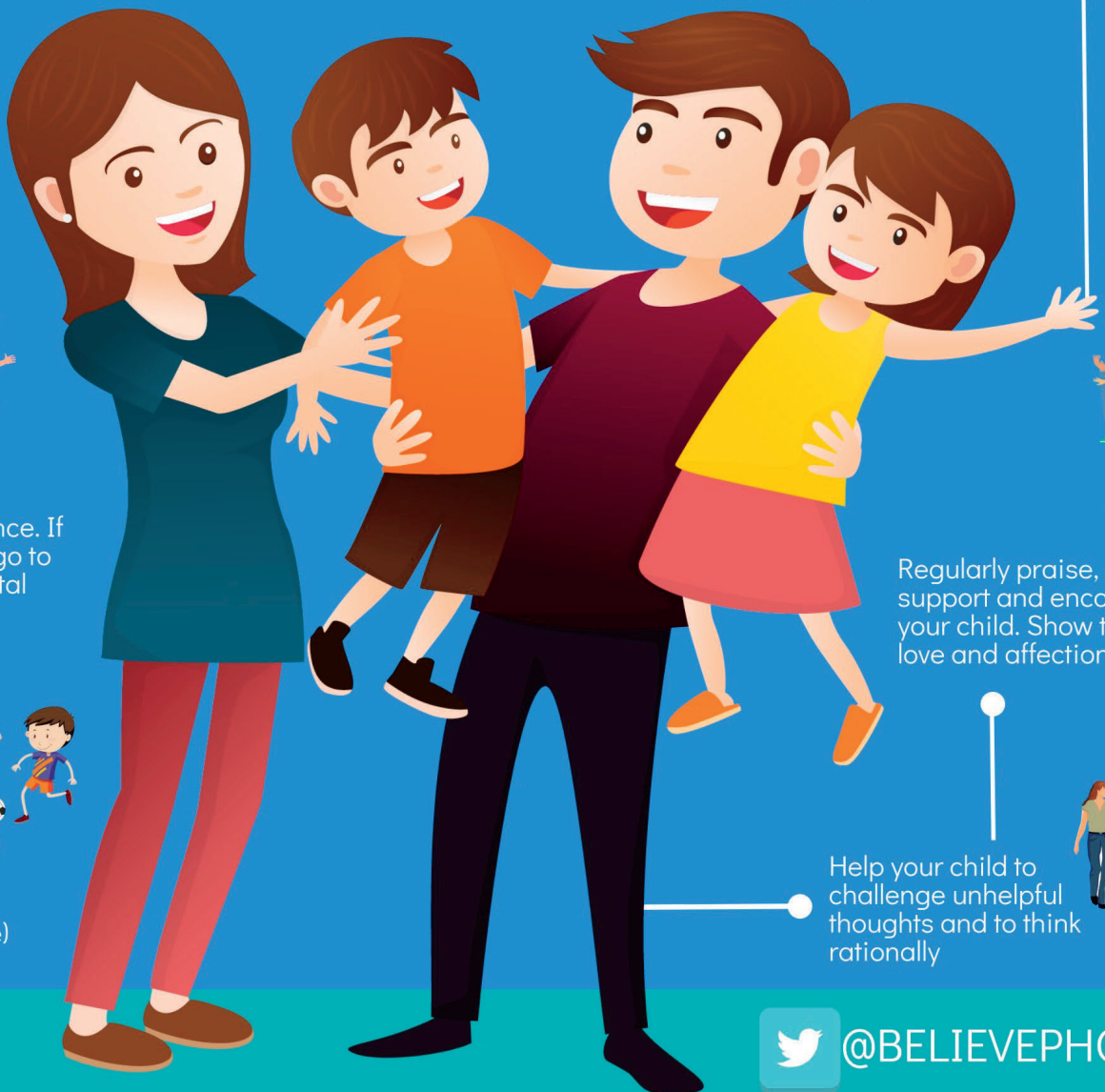


Make sure your child is looking after their physical wellbeing (Sleep, food, exercise)

Regularly praise, support and encourage your child. Show them love and affection



Help your child to challenge unhelpful thoughts and to think rationally



@BELIEVEPHQ



- New Community Dodgeball Club Starting Thursday 12th January 2023
- Thursdays 8-9pm
- Adult Dodgeball 16+
- Hodge Hill College, Bromford Road, B36 8HB

**1ST
SESSION
FREE

THEN
£3PW**

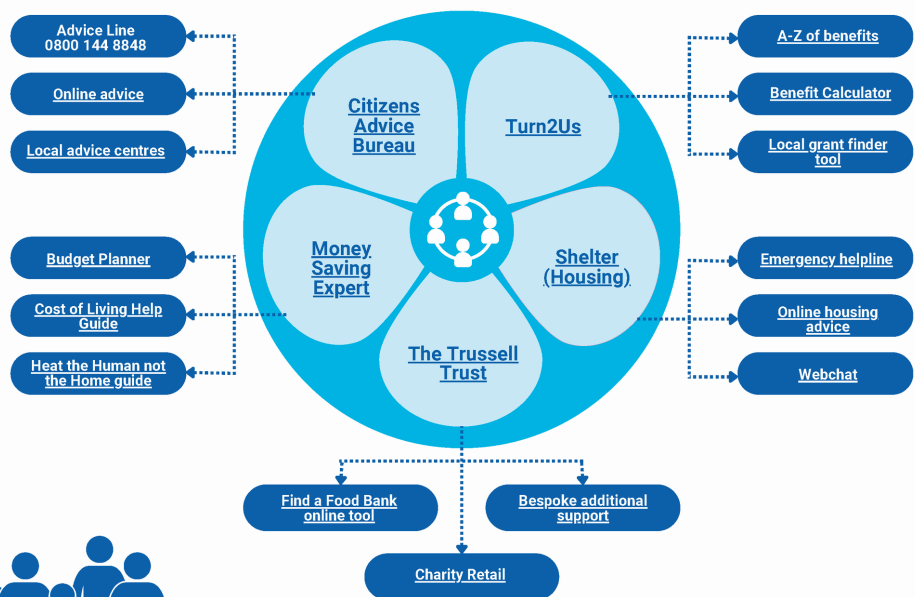
REGISTER NOW

**Facebook & Instagram -
HHDodgeball**



SUPPORT WITH THE COST OF LIVING

As we approach a challenging winter, schools are likely to experience an increased demand to signpost to services and organisations that can provide support with the cost of living crisis. The organisations and resources listed here may be useful. Click on the links to find out more.



MY Ed

Connecting parents, students and schools



Download our school app NOW

Step 1: Go to your app store

1



Step 2: Search for My Ed

2



Step 3: Download the app

3

FREE
Download

Information about your student and school direct into your pocket.

95%

Attendance

Keep up to date with your child's attendance details.



Forms

Fill in forms securely on your app and return them directly to school.



Timetables

Get regular updates on timetables.



Key Dates

Important dates the school needs you to know.



News

Access the latest school news.



Info Packs

Digital information packs reduces time, hassle & paper.



GET THE APP HERE

SCAN ME



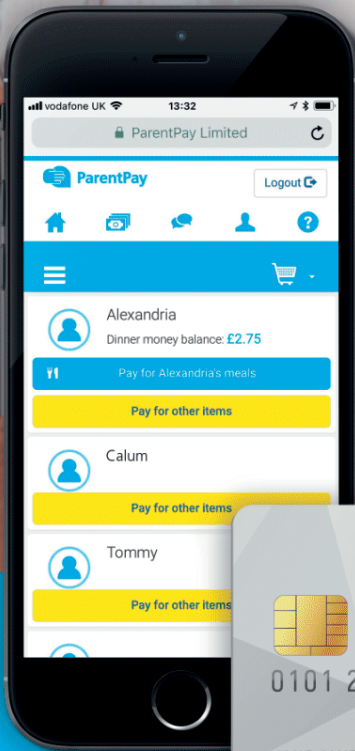
Find out more

www.myedschoolapp.com

THE EASY WAY TO PAY

We're using ParentPay so parents can easily pay online for school dinners, trips and clubs.

No stress, hassle free.



**SIMPLE
QUICK
SAFE**



www.parentpay.com



ParentPay
COUNT ON US



VISA Checkout

