

Weekly Bulletin

9 December 2024 - 13 December 2024



Important Dates

20 December	Staff Training Day & Year 9 Options Information Session
23 December-3 January	Christmas Holidays
6 January	Staff Training Day (School Closed)
7 January	All Pupils Return to School
22 January	Year 11 Parents' Evening



Year 9 Options Information Session



HH Hodge Hill College

**YEAR 9
OPTIONS
INFORMATION SESSION**

Friday 20 December
09:30-11:00

0121 783 7807  www.hodgehill.bham.sch.uk

In the new year, Year 9 pupils will begin selecting the courses they will study for their GCSEs. To assist in this process, we invite pupils and their parents/carers to come to school and learn more about the available choices.

These decisions are crucial, as pupils will be studying these subjects for two years. The choices they make now can influence the options available to them after leaving Hodge Hill College.

We require all Year 9 pupils and their parents/carers to attend on Friday 20 December 2024 from 09:30 to 11:00. Interim Reports will be available for collection in the morning.

End of Autumn Term Arrangements

All pupils will be dismissed for the Christmas holidays on Thursday 19 December 2024 at 15:10. We would like to take this opportunity to thank you for your continued support throughout 2024. At Hodge Hill College, we wish you a restful holiday season and a Happy New Year. We look forward to welcoming all pupils back to school on Tuesday 7 January 2025 at 8:30am.

Useful Links



[Hodge Hill College](#)



[ParentPay](#)



[MyEd](#)



[Birmingham City Council](#)

MY Ed

Connecting parents, students and schools



Download our school app NOW

Step 1: Go to your app store

1



Step 2: Search for My Ed

2



My Ed

Step 3: Download the app

3

FREE
Download

Information about your student and school direct into your pocket.

95%

Attendance

Keep up to date with your child's attendance details.



Forms

Fill in forms securely on your app and return them directly to school.



Timetables

Get regular updates on timetables.



Key Dates

Important dates the school needs you to know.



News

Access the latest school news.



Info Packs

Digital information packs reduces time, hassle & paper.



GET THE APP HERE

SCAN ME



Find out more

www.myedschoolapp.com

COVID-19 Immunisation During this Autumn/Winter Campaign 2024

The Autumn/Winter immunisation campaign 2024 concludes in the next few weeks. If your child is eligible due to their medical history (see below), they may have an increased risk of complications if they acquire COVID-19 disease. Immunisation offers your child the greatest protection against COVID-19 as we move into winter.

Risk groups include those with neurodisability and severe/profound learning disabilities.

Over the next few weeks, immunisation clinics for COVID-19 are being held at Birmingham Children's Hospital.




To book an appointment please contact the bookings team either via email at BSOLVaccinationBooking@uhb.nhs.uk or via telephone on 0121 371 8445.

If you have any questions or require more information, please contact the bookings team who will be happy to assist.

Coughs/Colds

Cough is extremely common in children and usually gets better by itself with no specific treatment, although the cough often takes 2 to 3 weeks to disappear. Occasionally, children with cough can sometimes develop a chest infection.

When Should You Worry?

 <p>RED</p>	<p>If your child has any of the following:</p> <ul style="list-style-type: none">■ Is going blue around the lips■ Has pauses in their breathing (apnoeas) or has an irregular breathing pattern or starts grunting■ Severe difficulty in breathing - too breathless to talk or eat/drink■ A harsh noise as they breath in (stridor) present all of the time (even when they are not upset)■ Becomes pale, mottled and feels abnormally cold to touch■ Becomes extremely agitated (crying inconsolably despite distraction), confused or very lethargic (difficult to wake)■ Develops a rash that does not disappear with pressure (the 'Glass Test')	<p>You need urgent help. Go to the nearest Hospital Emergency (A&E) Department or phone 999</p>
 <p>AMBER</p>	<p>If your child has any of the following:</p> <ul style="list-style-type: none">■ Has laboured/rapid breathing or they are working hard to breath - drawing in of the muscles below their lower ribs, at their neck or between their ribs■ A harsh breath noise as they breath in (stridor) present only when they are upset■ Seems dehydrated (sunken eyes, drowsy or not passed urine for 12 hours)■ Is becoming drowsy (excessively sleepy) or irritable (unable to settle them with toys, TV, food or picking up - especially if they remain drowsy or irritable despite their fever coming down)■ Has extreme shivering or complains of muscle pain■ Continues to have a fever of 38.0°C or above for more than 5 days■ Is getting worse or if you are worried	<p>You need to contact a doctor or nurse today. Please ring your GP surgery or contact NHS 111 - dial 111 or for children aged 5 years and above visit 111.nhs.uk</p>
 <p>GREEN</p>	<ul style="list-style-type: none">■ If none of the above features are present	<p>Self Care Continue providing your child's care at home. If you are still concerned about your child, contact NHS 111 – dial 111 or for children aged 5 years and above visit 111.nhs.uk</p>

Click [here](#) to read more.

YOU SHOULD CHECK NHS 111 ONLINE / CALL 111 IF

- Pink / red eyes / cough / runny nose
- Ear pain less than 2 days
- Mild tummy pain that comes and goes

For up to date advice on COVID-19 and childhood illnesses/injuries visit: www.nhs.uk OR
<https://bwc.nhs.uk/>
<https://www.birminghamandsolihullccg.nhs.uk/your-health/children-s-young-people-and-maternity-services-during-covid-19>

YOU SHOULD CALL YOUR GP/111 IF

APPEARANCE

- Mild allergic reaction (known or suspected)
- New rash that fades when you press it

BEHAVIOUR

- Mild irritability/sleepier than normal
- Moderate tummy pain
- Vomiting and diarrhoea
- Ear pain for more than 2 days

BREATHING

- Wheezing
- Fast Breathing

OTHER

- Temperature
 - More than 39 in child aged 3-12 months
 - More than 38 in a child for 5 days or more
- Not passed urine for 12 hours

YOU SHOULD GO TO A&E IF

APPEARANCE

- Dizziness/feeling faint
- Rash that doesn't fade when you press it

BEHAVIOUR

- Severe tummy pain

OTHER

- Burn
- Possible broken bone

OTHER

- Swallowed foreign objects
 - Especially magnets/batteries
- Temperature higher than 38 in a baby younger than 3 months old
- Your child has a specific health care plan that tells you to go to A&E
- Head injury

YOU SHOULD CALL 999 / GO TO A&E IMMEDIATELY IF

APPEARANCE

- Pale/Ashen/Mottled/Blue Colour
- Collapsed/unresponsive/loss of consciousness
- No obvious pulse or heartbeat
- Severe allergic reaction

BEHAVIOUR

- Extreme
- Irritability
- Pain
- Sleepiness (can be woken but falls asleep immediately)
- Seizure/jerking movements/fit

BEHAVIOUR

- Sucking in and out between ribs
- Flaring nostrils
- Extremely fast breathing
- Noisy breathing

OTHER

- Bleeding from an injury, that doesn't stop after 10 minutes of pressure
- Overdose of medication or other substances

MENTAL HEALTH SUPPORT 24/7 FOR ALL AGES IN BIRMINGHAM & SOLIHULL Call 0800 915 9292 / 0121 262 3555

In Birmingham (FTB) - age 0-18 Years

- 7 Days a Week 10am-6pm
- 0207 841 4470
- Email: askbeam@childrenssociety.org.uk

In Solihull (SOLAR) - age 0-18 Years

- Mon-Fri 8am-8pm 0121 301 2750
- Weekends and Evenings 8pm-8am 0121 301 5500

Kooth – For 11-25 year olds in Birmingham and Solihull

Peer to peer support through moderated discussion forums, self-care tools and resources and online mental health counselling and chat services from 12pm-10pm during the week, and 6pm-10pm at weekends: www.kooth.com

FACT!

Antibiotics don't usually speed up recovery.

No antibiotics

VS

Antibiotics



7 out of 10 children with a cough will feel better within 3 weeks
WHETHER OR NOT they take antibiotics

Coughs and colds generally improve without the need for antibiotics in otherwise healthy, vaccinated children

Unfortunately antibiotics can cause harm

3 out of 10



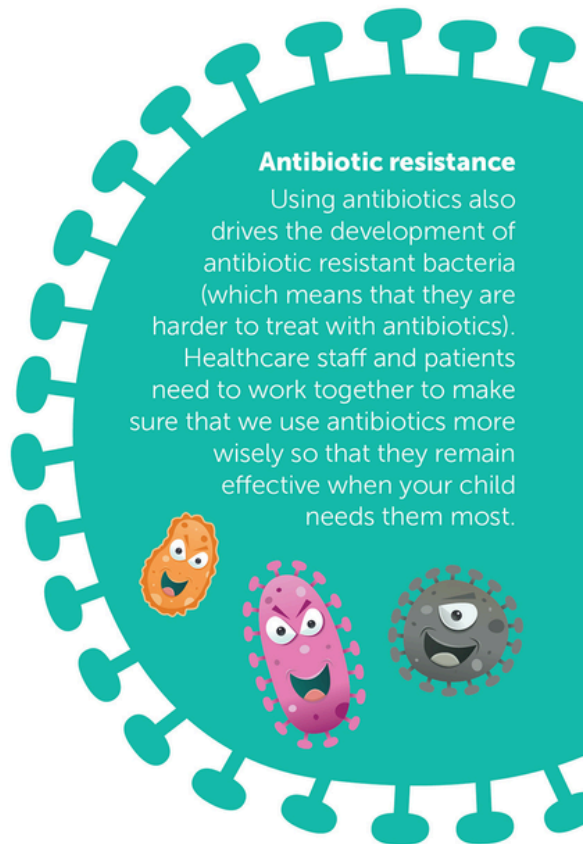
children who take antibiotics will experience side effects



Nausea Headache Vomiting Diarrhoea

Antibiotic resistance

Using antibiotics also drives the development of antibiotic resistant bacteria (which means that they are harder to treat with antibiotics). Healthcare staff and patients need to work together to make sure that we use antibiotics more wisely so that they remain effective when your child needs them most.



Antibiotics should only be used if their benefits are likely to outweigh their harms

Hodge Hill College Food Bank

At Hodge Hill College, we are committed to supporting our school community.

Our food bank is available to assist families who may need extra support during challenging times. If you would like to access this service, we kindly ask you to complete the online request form, which can be found on our website <https://bit.ly/3Uxzi4X> or email us at: householdsupport@hodgehill.bham.sch.uk.

All requests are handled confidentially, and we aim to provide help as quickly as possible.

If you have any further questions or need assistance completing the form, please do not hesitate to contact the School Office. The team are here to help.

Absence Reporting

If your child is going to be absent from school, please let us know before 08:30. You can do this by sending an in-app message (free of charge) to the Absence Hotline via our MyEd app or calling 0121 783 7807. Parents/Carers may be asked to provide medical evidence where there are repeated absences due to reported illness.

Punctuality

All pupils must arrive on time each day to run the school efficiently. Pupils are expected to be on school premises by 08:30. Any pupil who arrives after 08:40 will be considered late and marked accordingly by the staff members present at the gates. The main school gates will close at 08:40, and any pupil who arrives after this time will need to sign in via the School Office.

If a pupil is late for school, they will receive a 30-minute detention on the same day. Similarly, if a pupil is late for a lesson, they will receive a 30-minute detention on the same day. If a pupil is marked late more than once in a day, the detention time will be increased on the same day.

Learning Wallets, School Bags & Equipment

All pupils have been given a learning wallet containing the equipment they need to bring to school to support their access to the curriculum. This needs to be brought into school every day in a school bag to ensure it is kept safe. Pupils without a bag have been provided with one. Failure to bring in the learning wallet or school bag will result in a 60-minute detention.

If pupils lose any of their equipment, they are responsible for replacing it. Stationery items are available for purchase at both canteens for a nominal amount of 10p per item (cash). If your child is in Years 7-10 and needs to replace their calculator, you can either provide one or purchase a new one through ParentPay/the School Office for £15 (cashless). If your child is in Year 11, they can obtain one from Mrs Millington. Empty learning wallets are also available to purchase through ParentPay/the School Office for £1.70.

Personal Development Curriculum

As a part of your child's education at Hodge Hill College, we promote personal well-being and development through a comprehensive Personal, Social, Health and Economic (PSHE) education programme.

PSHE education is the curriculum subject that gives young people the knowledge, understanding, strategies and practical skills to live safe, healthy, productive lives and meet their full potential.

Our PSHE programme is delivered through form-time activities to all year groups and through our Personal Development weekly lessons to pupils in Years 7, 8 and 9.

Please note, that the pages linked below are updated with resources regularly.

Week commencing 9 December 2024, Year 10 and Year 11 pupils will participate in a Sex Education scheme during Tutor Time. If you have any questions or would like to discuss the content of these activities with a staff member, please email personaldevelopment@hodgehill.bham.sch.uk.

[Year 7](#)

[Year 8](#)

[Year 9](#)

[Year 10](#)

[Year 11](#)

Penalty Notices

From 19 August 2024, the new National Framework for issuing penalty notices will apply.

National Threshold

There will be a single consistent national threshold to consider if a Penalty Notice must be considered by all schools in England of 10 sessions (usually equivalent to 5 days) of unauthorised absence within a rolling 10-school week period.

These sessions do not have to be consecutive and can be made up of a combination of any type of unauthorised absence.

The 10-school week period can span over different terms and school years.

Penalty Notice Fines will continue to be issued per parent per child.

Example: 2 parents with 3 children would receive a total of 6 Penalty Notices

1

First Offence

- £100 per parent, per child paid within 28 days
- Reduced to £60 per parent, per child if paid within 21 days
- Unpaid Penalty Notices after 28 days may result in a prosecution

2

Second Offence (within 3 years of the First Offence)

- Where it is deemed appropriate to issue a second Penalty Notice to the same parent for the same pupil within 3 years of the first notice
- £100 per parent, per child paid within 28 days
- Unpaid Penalty Notices after 28 days may result in a prosecution

3

Third Offence and any further offences (within 3 years of the First Offence)

- The third time that an offence is committed for either a term time holiday and/or irregular attendance, a Penalty Notice will not be issued, the case may be proceeded straight to prosecution under the Education Act 1996, Section 444
- If found guilty of the offence of "failure to secure their child's regular attendance at a school" the Magistrates can impose a fine of up to £1,000 and you will have a criminal record

Please Note

If you take any Leave of Absence PRIOR to 19 August 2024 (e.g. in July 2024) then the Penalty Notice will be at the old rate of £60/£120. Any Leave of Absence taken in or after September 2024 will be charged at the new rates as above.

Detentions

Hodge Hill College operates a detention system. If your child is late, misbehaves or doesn't hand in their homework on time, they will be given detention at lunchtime or up to 30 minutes at the end of the day. You will usually get a text or an in-app message on MyEd to inform you. Please ensure your contact details are up to date. For more serious matters, staff can issue an hour's detentions after school without giving parents/carers notice.

What the Law Allows

- Teachers have the power to issue detention to students (aged under 18)
- Schools must make clear to students and parents/carers that they use detention (including detention outside of school hours) as a sanction
- The times outside normal school hours when detention can be given (the 'permitted day of detention') include:
 - any school day where the student does not have permission to be absent
 - weekends - except the weekend preceding or following the half-term break
 - non-teaching days – usually referred to as 'training days', 'INSET days' or 'non-contact days'
- Parental consent is not required for detentions
- As with any disciplinary penalty, a member of staff must act reasonably given all the circumstances

The Government's summary on behaviour and discipline in schools can be read online at: <https://bit.ly/39yoRFb>.

Uniform & Standards

As part of the school's continued drive to improve standards, we would like all pupils to consistently adhere to the expectations on appearance, conduct and equipment. We are a professional environment and as such, we need all pupils to look smart, professionally conduct themselves and come equipped for their learning.

If a pupil does not meet the standards consistently, they will sit a 30-minute detention. We must have your support to raise our standards collectively. Please can we remind you that pupils are not permitted to wear nose studs and patterns and lines are not to be shaved into hairstyles or eyebrows.

If there are any problems in acquiring uniform, please contact the school and we will endeavour to work with you to address these issues. Such cases will be treated with due sensitivity and confidence.

Our full school uniform and PE kit list can be found at <https://www.hodgehill.bham.sch.uk/uniform>.

Year 11 After-school Tuition

We have introduced a comprehensive new tuition model to support Year 11 pupils' academic progress. Pupils requiring additional help are identified early through mock exams and subject-led assessments.

Teachers use focused tuition sessions to provide targeted support in small groups. There are dedicated after-school sessions each week for Maths, English, Science, and other core subjects. Those making significant progress can move out of the tuition program, while those who require further support may receive more intensive interventions with subject specialist teachers.

This multi-layered approach aims to collect and utilise data effectively, allowing teachers to adapt and personalise tuition to meet individual pupils' needs throughout the academic year.

This tuition timetable is available at <https://www.hodgehill.bham.sch.uk/tuition>.

Extra-curricular Activities & Clubs

At Hodge Hill College, our enrichment and extra-curricular provision provides our pupils with a breadth and balance of activities designed to broad their horizons, allowing them to develop their own interests and talents. The programme is an extension of the school's curriculum and builds on our CARE brand whilst instilling British Values.

We offer quality provision which provides our pupils with a number of opportunities to develop their resilience, character and performance. Our sports provision has continued to improve to develop pupils physically and mentally.

Please note, that all pupils must sign in at reception upon arrival for before-school sessions each morning.

For more information and the activities timetable, please visit: <https://www.hodgehill.bham.sch.uk/extracurricular>.

10 Top Tips for Parents and Educators

SAFETY OVER THE FESTIVE SEASON

The holiday season, marked by Christmas and New Year, brings joy and togetherness but also presents unique safety challenges for children, families and educators. From busy holiday shopping, traveling and family gatherings to managing digital activity during school breaks, staying safe during this period requires heightened awareness. This guide offers practical tips to help families and educators maintain a more secure and fulfilling festive period.

1 MONITOR DIGITAL ACTIVITY

Children spend more time online during school holidays, increasing exposure to potential dangers such as cyberbullying, inappropriate content and online predators. Balancing screen time, avoiding harmful websites and ensuring children engage positively online can be difficult without proper monitoring tools. Set clear boundaries, encourage open discussions about online safety and use parental controls to manage content exposure and screen time effectively. Regular check-ins and positive reinforcement around digital habits encourage safe online behaviour.

2 PRACTICE FIRE SAFETY PROTOCOLS

The incidence of house fires increases during Christmas due to greater use of candles, cookers and electrical decorations. Open flames, electrical overloads and the need for quick response plans can make fire safety challenging. Ensure smoke detectors are operational, keep fire extinguishers on hand and teach children how to respond in case of a fire emergency. Avoid leaving cooking unattended and use fire-safe candles to prevent mishaps.

3 CREATE TRAVEL SAFETY PLANS

More families tend to travel during the holidays, resulting in busier roads, increased traffic accidents and weather-related hazards. Weather conditions, road rage, fatigue and busy airports can all compromise travel safety. Pack emergency kits and adhere to seatbelt laws. Plan routes in advance and allow extra travel time to avoid rushing and mitigate risks on busy roads.

4 BEWARE OF ALLERGIES

Holiday meals often involve many foods that may contain allergens. Cross contamination, unclear labelling and lack of allergy-friendly options can lead to severe reactions. Communicate any allergy needs to hosts, provide safe food alternatives and carry necessary medications like antihistamines or EpiPens. Teaching children how to advocate for themselves and recognise dangerous foods also contributes to safer celebrations.

5 PREVENT THE SPREAD OF ILLNESS

Cold weather and seasonal socialising can increase the spread of viruses like flu and COVID-19. Crowded gatherings, schools out of session and frequent travel can lead to higher infection risks. Emphasise hygiene, encourage vaccination, disinfect surfaces and isolate symptomatic individuals. Communication with children about proper hygiene practices is essential to reduce the spread of illness.

6 STAY VIGILANT ON THE ROAD

Increased holiday traffic heightens the risk of accidents for both drivers and pedestrians. Distracted driving, pedestrian safety and inclement weather can complicate road safety. Encourage pedestrian safety practices, avoid distracted driving and never drive under the influence.

7 MAINTAIN SAFE DECORATIONS

Festive decorations such as Christmas lights and candles can pose electrical, fire and choking hazards if mishandled. Frayed wires, toppling Christmas trees, small ornaments and open flames can be difficult to control, especially in busy households with children. Inspect and maintain decorations, secure Christmas trees, place fragile or small items out of reach and ensure candles are never left unattended. Testing smoke alarms and using flame-retardant decorations can significantly reduce risks.

8 SET BOUNDARIES FOR GIFTS

Some toys and gadgets can present choking, sharp-edge or safety risks, particularly for young children. Ensuring that gifts meet safety standards and are age appropriate can be complex with so many options available. Inspect all toys carefully and ensure any tech devices have parental controls. Setting expectations around safe gift use and discarding packaging that poses a risk also helps to prevent accidents.

9 ADDRESS STRESS & FATIGUE

Holiday pressures can lead to burnout, which affects both physical and mental health. Overpacked schedules and a lack of downtime can cause stress and fatigue, leading to accidents or poor decision making. Incorporate rest, maintain regular routines and seek support to reduce stress. Encourage activities that promote relaxation to create a healthier, happier holiday experience for everyone.

10 DRINK RESPONSIBLY

Alcohol is commonly present at holiday events, raising concerns about safety and supervision. Excessive alcohol consumption can lead to accidents, impaired judgment and lack of supervision for children. Designate responsible adults, limit consumption and provide transportation alternatives for guests. Teaching moderation and modelling responsible behaviour in front of children ensures that celebrations remain positive and secure.

Meet Our Expert

James Whelan is a chartered health and safety consultant with 10 years of experience in promoting family and community safety. Specialising in risk assessment and preventative strategies, he has worked with educational institutions, public health agencies and community groups to deliver safety education and training.



The National College

Zero Tolerance

Please note that Hodge Hill College operates a zero-tolerance policy about verbal and physical aggression.

If you become abusive towards a member of staff, we will need to:

- Close down any conversation and not speak with you any further
- Ask you to leave and come back another time
- If necessary, call the police for assistance

Please be respectful of our staff in the School Office team. They will do their best to help you but in a large school with several buildings, over 150 members of staff, and approximately 1200 pupils, they may not always be able to find out what you want to know or locate a member of staff immediately, so please be patient.

Is my child too ill for school?

We know that, at certain times of the year, children pick up bugs and illnesses. However, please remember that children can come to school with some illnesses if they feel well enough. NHS guidance is available at <http://bit.ly/3hD7ryQ>.

Medical Appointments During the School Day

In order to ensure that your child's learning is not disrupted, it is strongly recommended that non-urgent GP, dentist, or optometrist appointments are scheduled outside of school hours.

If your child has a hospital appointment or requires specialist medical care, please inform the school in advance. You can do so by sending a photo of the appointment letter via MyEd or by submitting it in person to the School Office. A copy of the letter will then be sent to your child's AC and AAC to authorise the absence.

Medication

As a parent or carer, it is your responsibility to provide the school with accurate and updated information regarding your child's medical needs. You should also be involved in developing and reviewing your child's individual healthcare plan.

If your child has any medical needs or needs to take medication during school hours, please visit the School Office to complete a Parental Medical Consent Form and drop off any medication that needs to be kept in school.

If your child has asthma, we highly recommend that they always carry an inhaler with them. Please provide us with an inhaler by dropping it off at the School Office in case of any emergencies, and completing the consent form.

Contact Details

Please remember to inform the school of any changes to your contact details.

This is important because we may need to contact you if your child is injured or taken ill, to provide you with information about trips and closures or to send you reminders and cancellations of any event.

Please update and submit any new details via the Change of Pupils Details Form on the MyEd app. Alternatively, you may visit the School Office to complete an electronic/paper copy of the form.

Confiscated Items

If a pupil has an item confiscated, their parents/carers can pick it up from the School Office after school on the same day between the following times:

- Monday: 16:10-16:45
- Tuesday to Thursday: 15:10-16:00
- Friday: 13:40-14:30

If parents/carers cannot collect it on the same day, they must pick it up on another day after school. Pupils are not permitted to collect the item.



B.Y.O.B

BRING YOUR OWN BOTTLE

As part of our move towards sustainability, single-use plastic cups are no longer available in school.

All pupils must take responsibility for bringing in their own reusable water bottles.

Reusable water bottles are available to purchase from West Office using money on ParentPay.

Road Safety

To ensure the safety of all our children, please take care to follow these guidelines:

- Driving at the speed limit for the type of road and your type of vehicle
- Cars should not be parked on the zig-zags or yellow lines, across driveways or on pavements because this obstructs the view of oncoming vehicles and children who are trying to cross the road
- Please remember those families who need to walk past with a buggy and our neighbours
- Please ensure that you model the highest safety standards with your child by walking them to/from the pedestrian crossing if you are dropping them off or collecting them from school

We are very grateful to all the parents/carers who have been supportive and hope that we can all continue to work together to make the journey to and from school a safer one.

Reading Tests

Pupils in Year 7 and Year 8 will be sitting their Reading Tests during the weeks commencing:

Week Commencing	Year Group & Test
6 January 2025	Year 7 - Reading Test 2
13 January 2025	Year 8 - Reading Test 1
9 June 2025	New Year 8 - Reading Test 3
16 June 2025	New Year 9 - Reading Test 2

These assessments are an important opportunity for pupils to demonstrate their reading comprehension skills and for teachers to understand their current academic progress.

Our Community and the Cost of Living

Now more than ever, with the rising cost of living, many families are feeling the squeeze. As a school, we are actively seeking to do whatever we reasonably can to support our students and their families with these rapidly growing pressures.

We are continuing to open West Canteen to pupils every morning before school between 8:00am and 8:30am to provide a free breakfast including toast and hot drinks. Please encourage your child to attend this, particularly if they arrive early to school in the morning, as it is a supervised space with access to games and other activities.

If you are facing particular hardships, please feel free to get in touch with us here at Hodge Hill College at householdsupport@hodgehill.bham.sch.uk. All requests will be treated with the utmost confidentiality and we will look at what support we are able to practically provide.

Further information about support being provided by Birmingham City Council for the cost of living crisis can be found on <https://www.birmingham.gov.uk/livingsupport> and this may be of use to you in signposting where you can get help, support, and advice if you are affected.

We have a second-hand store of pre-loved uniform items, all washed and ready if you need them. Please get in touch with the school at the email address above if you would like to take advantage of this.

Uniform Donations

Throughout the year, we kindly request your help in supporting other families in need. If your children have outgrown their old school uniforms, please consider donating them to the School Office. We will collect all donated uniforms and distribute them to pupils who would greatly benefit from them. Even a single donated item can make a significant difference.

We are happy to accept donations of new uniforms too. Whether gently used or brand new, your contributions are greatly appreciated.

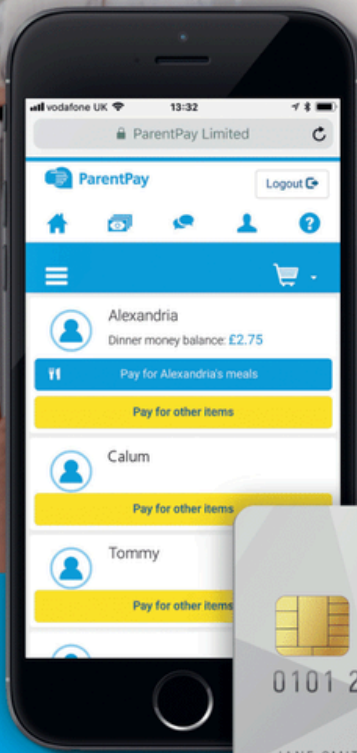
Please make sure to wash any used uniforms before donating and ensure they are in good condition. You can send the uniforms with your child or drop them off at the School Office yourself. We appreciate anything you can provide to help clothe and equip pupils whose families are facing financial difficulties.

Together, we can ensure that all our students feel comfortable, confident, and ready to learn.

THE EASY WAY TO PAY

We're using ParentPay so parents
can easily pay online for school
dinners, trips and clubs.

No stress, hassle free.



**SIMPLE
QUICK
SAFE**



www.parentpay.com



ParentPay
COUNT ON US

VISA

VISA Checkout



ParentPay

ParentPay enables parents/carers to make secure payments for their child's lunches and school trips.

ParentPay Activation

When pupils join Hodge Hill College, parents/carers are issued with a ParentPay Activation Letter that contains a temporary ParentPay username and password. As part of the account activation, the parent/carer will need to choose an email address and new password to use with ParentPay. Parents/carers should follow the instructions in the letter, and on www.parentpay.com to successfully activate their account. If you have more than one child at our school or have children in other schools that use ParentPay, you can create a single account to manage them all.

Forgotten Password

If a parent/carer can't get into their ParentPay account, they should go to www.parentpay.com > For Parents > Parent Login, and click on the "Forgotten password" link. Parents/carers should not need to contact school to regain access to ParentPay accounts.

Outstanding Balances

If you have an unpaid balance on your child's ParentPay account, we kindly request you to settle it as soon as possible by logging into your account. Your child will need to bring their own packed lunch and they will not be able to use the school canteen until the account is topped up and the debts have been cleared.

If you need help with adding credit to the account, please visit the School Office with your debit card.

FAQs & More Information

- FAQs: www.hodgehill.bham.sch.uk/parentpay
- More information: www.parentpay.com
- Call the School Office: 0121 783 7807

Free School Meals

Who is eligible for Free School Meals?

Your child may be able to get free school meals if you get any of the following:

- Income Support
- income-based Jobseeker's Allowance
- income-related Employment and Support Allowance
- support under Part VI of the Immigration and Asylum Act 1999
- the guaranteed element of Pension Credit
- Child Tax Credit (provided you're not also entitled to Working Tax Credit and have an annual gross income of no more than £16,190)
- Working Tax Credit run-on - paid for 4 weeks after you stop qualifying for Working Tax Credit
- Universal Credit - if you apply on or after 1 April 2018 your household income must be less than £7,400 a year (after tax and not including any benefits you get)

Apply for Free School Meals

We encourage you to apply for Free School Meals through the online service found on our website: www.hodgehill.bham.sch.uk/freeschoolmeals. You can also telephone (0121 783 7807) or come into school and complete a Free School Meals application online with a member of staff if you prefer.

Please make sure you have the National Insurance Number with you for the named person who receives either working tax credit/child tax credit and we will be happy to help.

Weekly Lunch Menu

The school lunch menus are available to view online and provide an overview of the menu items that will be served each day: <https://www.hodgehill.bham.sch.uk/lunch>.



Responsibly sourced,
Safe British Produce,
Good Animal Welfare.



Organic Product Suppliers



Healthy Food
Fresh Ingredients
75% freshly prepared



Highest Standards in UK
Egg Production



Wild fish or Seafood from
Sustainable Fishing



FAIRTRADE Sourced Ingredients



Sustainably Farmed Products



Commitment to ongoing
environmental improvement.

12 DAYS OF CHRISTMAS

Menu

2nd December: Shortbread Stars

3rd December: Christmas Jammy Dodger

4th December: Gingerbread Men

5th December: Festive Turkey Bap

6th December: Cinnamon Buns

9th December: Chocolate Christmas Puddings (Crispy Cakes)

10th December: Christmas Turkey Wrap

11th December: Christmas Tree Biscuits

12th December: Christmas Cup Cakes

13th December: Festive Cookies

16th December: Hot Turkey Baguette

17th December: Turkey Loaded Nachos

Translate Our School Website Using Google Translator on Chrome

If you need help understanding information on our school's website, Google Chrome has a built-in translation feature that can translate the pages into your preferred language.

To use this, first make sure you have the latest version of Google Chrome installed on your device. Then navigate to our school's website and click on the three-dot menu icon in the top right corner of Chrome. Select "Translate" from the menu. This will bring up a sidebar where you can choose which language you want to translate the page into. Click on your desired language and Chrome will automatically translate everything on the webpage.

The translation may not be completely perfect, but it should help convey the key information and allow you to understand important updates from teachers or the school administration.

This feature works for dozens of popular languages - just select the one you feel most comfortable with.

Examples:

Arabic



Bangla



Chinese



Romanian



Polish



Urdu



Homework - Useful Links



[SAM Learning](#)



[ClassCharts](#)



[MathsWatch](#)



[My GCSE Science](#)



[myON](#)

