

Weekly Bulletin

10 June 2024 - 14 June 2024

Important Dates	
19 June-2 July	<u>New Year 11 Mock Exams</u>
28 June	New Year 9 HPV Immunisation Catch-ups
3 July	Year 6 Induction Day & Welcome Event
5 July	Staff Training Day (School Closed to Pupils)
8 July-18 July	Year 10 Work Experience
19 July	Year 10 Work Experience - Debrief & End of Summer Term
22 August	GCSE Results Day
2 September	Start of Autumn Term & Staff Training Day (School Closed to Pupils)
3 September	Year 7 & 11 Start School
4 September	Year 8, 9 & 10 Start School
18 September	Year 7-11 Flu Immunisations

Learning Wallets, School Bags & Equipment

All pupils have been given a learning wallet containing the equipment they need to bring to school to support their access to the curriculum. This needs to be brought into school every day in a school bag to ensure it is kept safe. Pupils without a bag have been provided with one. Failure to bring in the learning wallet or school bag will result in a 60-minute detention.

If pupils lose any of their equipment, they are responsible for replacing it. Stationery items are available for purchase at both canteens for a nominal amount of 10p per item (cash). If your child is in Years 8-10 and needs to replace their calculator, you can either provide one or purchase a new one through ParentPay/the School Office for £15 (cashless). If your child is in Year 11, they can obtain one from Mrs Millington. Empty learning wallets are also available to purchase through ParentPay/the School Office for £1.50.

Requesting Leave of Absence for Eid

All pupils celebrating Eid are entitled to request one day's leave for religious observance. Given that Eid celebrations may vary among our families, we ask that on the morning of Eid, you notify the school of your child's absence by one of the following:

- Sending an in-app message (free of charge) via our MyEd App
- Calling 0121 783 7807
- Emailing enquiry@hodgehill.bham.sch.uk

Whilst we acknowledge the importance of family time on the day of Eid, we are duty-bound to ensure all students are appropriately accounted for, therefore your cooperation in this regard would be appreciated.

The school (once notified) will authorise leave for the day requested and your child's record will be updated. Parents/Carers are reminded that any absence following this day of religious observance will be marked as unauthorised. In the case of absence due to illness, the school may request medical evidence before authorising any absence.

Useful Links



[Hodge Hill College](#)



[ParentPay](#)



[MyEd](#)



[Birmingham City Council](#)

flu: 5 reasons to have the vaccine

1. Protect yourself

The vaccine will help protect you against flu and serious complications such as bronchitis and pneumonia

2. Protect your family and friends

Having the vaccine will help protect more vulnerable friends and family

3. No injection needed

The nasal spray is painless and easy to have

4. It's better than having flu

The nasal spray helps protect against flu, has been given to millions worldwide and has an excellent safety record

5. Avoid lost opportunities

If you get flu, you may be unwell for several days and not be able to do the things you enjoy

For more information visit
www.nhs.uk/child-flu

Flu  **mmunisation**

Helping to protect you against flu



New Year 11 Mock Exams

New Year 11 mock exams begin on Wednesday 19 June 2024. The full timetable is available to view at <https://www.hodgehill.bham.sch.uk/exams>.

Zero Tolerance

Please note that Hodge Hill College operates a zero-tolerance policy about verbal and physical aggression.

If you become abusive towards a member of staff, we will need to:

- Close down any conversation and not speak with you any further
- Ask you to leave and come back another time
- If necessary, call the police for assistance

Please be respectful of our staff in the School Office team. They will do their best to help you but in a large school with several buildings, over 150 members of staff, and approximately 1200 pupils, they may not always be able to find out what you want to know or locate a member of staff immediately, so please be patient.

Is my child too ill for school?

We know that, at certain times of the year, children pick up bugs and illnesses. However, please remember that children can come to school with some illnesses if they feel well enough. NHS guidance is available at <http://bit.ly/3hD7ryQ>.

Medical Appointments During the School Day

In order to ensure that your child's learning is not disrupted, it is strongly recommended that non-urgent GP, dentist, or optometrist appointments are scheduled outside of school hours.

If your child has a hospital appointment or requires specialist medical care, please inform the school in advance. You can do so by sending a photo of the appointment letter via MyEd or by submitting it in person to the School Office. A copy of the letter will then be sent to your child's AC and AAC to authorise the absence.

Medication

As a parent or carer, it is your responsibility to provide the school with accurate and updated information regarding your child's medical needs. You should also be involved in developing and reviewing your child's individual healthcare plan.

If your child has any medical needs or needs to take medication during school hours, please visit the School Office to complete a Parental Medical Consent Form and drop off any medication that needs to be kept in school.

If your child has asthma, we highly recommend that they always carry an inhaler with them. Please provide us with an inhaler by dropping it off at the School Office in case of any emergencies, and completing the consent form.

Contact Details

Please remember to inform the school of any changes to your contact details. This is important because we may need to contact you if your child is injured or taken ill, to provide you with information about trips and closures or to send you reminders and cancellations of any event. Please update and submit any new details via the Change of Pupils Details Form on the MyEd app. Alternatively, you may visit the School Office to complete an electronic/paper copy of the form.

Confiscated Items

If a pupil has an item confiscated, their parents/carers can pick it up from the School Office after school on the same day. If they cannot collect it on the same day, the parent/carers must pick it up on another day after school. Pupils are not permitted to collect the item.

MY Ed

Connecting parents, students and schools



Download our school app NOW

Step 1: Go to your app store

1



Step 2: Search for My Ed

2



My Ed

Step 3: Download the app

3

FREE
Download

Information about your student and school direct into your pocket.

95%

Attendance

Keep up to date with your child's attendance details.



Forms

Fill in forms securely on your app and return them directly to school.



Timetables

Get regular updates on timetables.



Key Dates

Important dates the school needs you to know.



News

Access the latest school news.



Info Packs

Digital information packs reduces time, hassle & paper.



GET THE APP HERE

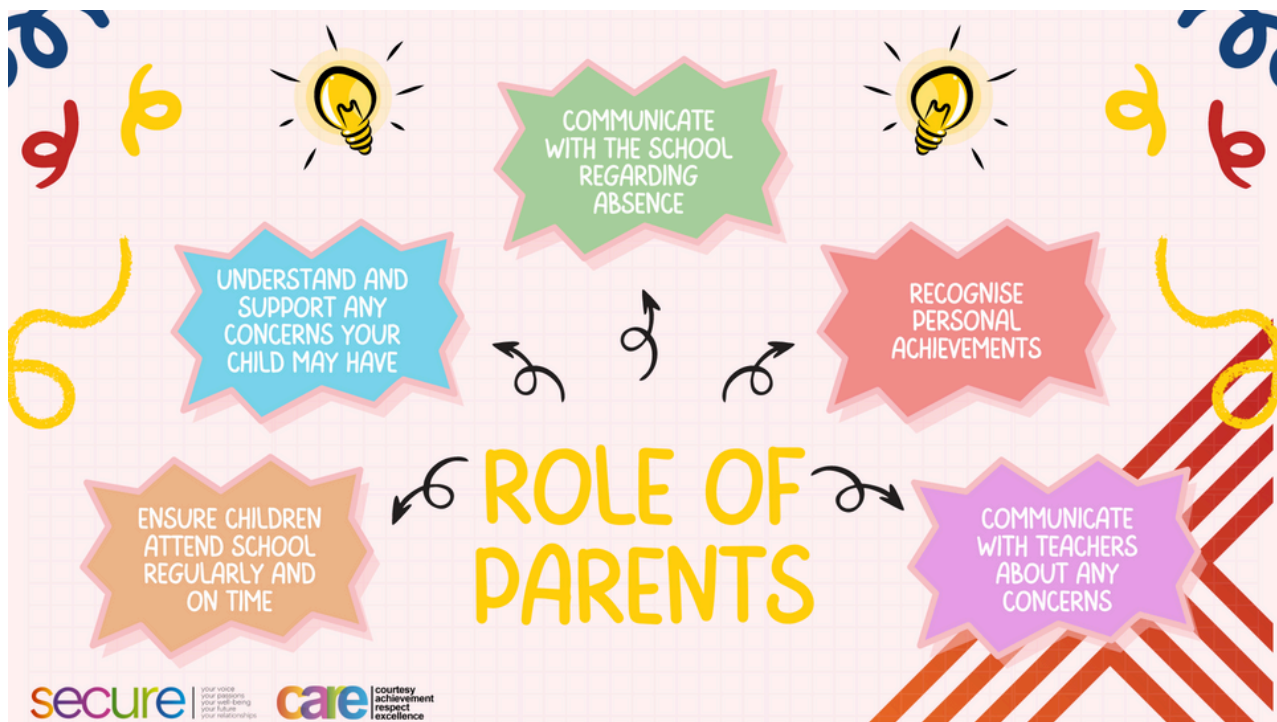
SCAN ME



Find out more

www.myedschoolapp.com

Role of Parents



Your role in your child's education is invaluable, and there are several key ways you can contribute to their success:

- Communicate with the school regarding any absences to ensure your child's attendance is properly accounted for and they don't fall behind
- Understand and support any concerns or challenges your child may be facing, whether academic, social, or emotional. Be patient, listen to them, and work together to find solutions
- Recognise and celebrate your child's personal achievements, no matter how big or small. This will boost their confidence and motivate them to continue striving for excellence
- Ensure your child attends school regularly and arrives on time. Consistent attendance is crucial for their academic progress and developing good habits.
- Communicate openly with your child's teachers about any concerns or issues you may have. A collaborative approach with open dialogue is essential for addressing challenges effectively

By being actively involved in these ways, you create a strong support system for your child's educational journey. Remember, your encouragement and involvement play a vital role in shaping their attitudes towards learning and their overall development. Let's work together to provide the best possible educational experience for our children.

Aladdin Junior - Request for Items to Borrow or Donate

The Hodge Hill Theatre Workshop is excited to present Disney's Aladdin Junior on 4 July 2024. To bring this magical production to life, we are seeking the following items that could be borrowed or donated:

- A throne suitable for a royal palace
- 10-12 meters of gold, pink, blue, or green fabric/material
- An authentic-looking genie's lamp but not of significant value
- Costume jewellery or fake jewels you no longer need

If you have any of these items available to lend or donate, please contact the School Office. Your contributions will help make our show truly sparkle and shine. We appreciate any assistance from our community in making this production a magnificent experience for all involved.

Important Reminder: Changes to School Day Timings from September 2024

We are committed to providing the best educational experience for our pupils. With this in mind, we would like to gently remind you of some changes to the school day timings that will take effect from September 2024. The Department for Education has set a new minimum expectation of a 32.5-hour school week. To meet this requirement, Hodge Hill College will return to our pre-Covid start and finish times, as follows: <https://bit.ly/3Uj11Vb>.

What Parents & Educators Need to Know about

POP-UP ADS

Pop-up advertisements have been a staple of the internet since they were first introduced in the late 1990s. This form of advertising causes a small window or banner to appear in the foreground while someone is browsing a website. Although these adverts are merely irritating for most people, pop-ups can present more severe risks to younger users.

WHAT ARE THE RISKS?

DECEPTIVE TACTICS

Children sometimes don't understand that adverts (including pop-ups) are designed to sell a product – and can't distinguish between a legitimate feature of a site and an advertisement. Video games, for example, can be full of pop-up ads that tempt users into spending money, yet they might take the form of a mini-game or extra level.

INAPPROPRIATE CONTENT

While some adverts are targeted based on a user's interests and activity online, that isn't always the case. This means that children may unfortunately be exposed to ads for age-inappropriate goods or services such as tobacco products, alcohol and gambling sites.

MALWARE RISK

Most pop-ups from reputable advertisers are safe. However, in some cases, pop-ups can trick you into downloading malware – whereby cybercriminals install software on your device, allowing them to access your sensitive data. It can be difficult to know if malware has been installed on your device, so your best option is to avoid engaging with these pop-ups altogether. Be wary of sites that suddenly bombard you with ads or try to prevent you from leaving.

PRIVACY RISK

Many app and game developers will collect their users' personal data, such as their name, address, email address, geolocation information, unique numerical identifiers, photos and payment information. If a child clicks on an illegitimate pop-up laced with malware, all this information could be put at risk.

RACKING UP BILLS

If a child has access to a payment card on their device – be it a smartphone, laptop, or tablet – they could very quickly rack up a massive bill by interacting with pop-up adverts and buying products shown to them. Try to keep a close eye on their spending.

BEHAVIOURAL IMPACT

Research has found that pop-up ads can even have an impact on children's behaviour. Some of these adverts use manipulative tactics that take advantage of children's developmental vulnerabilities, intentionally or otherwise. This approach may cause a child's mood to shift: becoming more stubborn, for example, if they begin wanting their parents to buy a specific product for them.

Advice for Parents & Educators

START A CONVERSATION

It's important to have regular conversations with children about online advertising so that they understand the risks of interacting with pop-ups. For example, if a child asks for a product which has been advertised to them online, ask them why they want it and how they found it: this will present an opportunity to talk youngsters through the tactics used in online marketing.

SPOT THE SIGNS

If you're concerned that a child may be following pop-up ads to make online purchases or viewing content that could be harmful, it's important to be able to spot the signs. Due to the often-manipulative nature of these adverts, children who interact with them regularly may show signs of distraction, stubbornness and an increasingly materialistic worldview.

MONITOR CONTENT

It can often be difficult to spot when a pop-up advert is malicious – even more so for impressionable younger users. It's important to monitor the content they're consuming to prevent them from clicking on something dangerous. If a pop-up ad seems too good to be true – promising a free iPad, for example – it probably is.

PRIVACY SETTINGS

Most modern devices have privacy settings that let you limit the amount of advertising a child is subjected to while using apps or browsing the internet. You may also want to speak to teachers about avoiding sites and apps with advertising, as well as adjusting digital privacy settings on any education technology they use.

LIMIT SPENDING

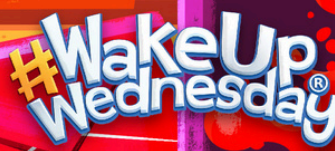
Try to stay aware of what children are spending and ensure that payment details aren't linked to or saved on the gaming platform that they use. Most video games and internet-enabled devices have settings that can help you manage what children can or cannot purchase online.

CUT DOWN ON SCREEN TIME

Given the prevalence of pop-up ads (which can appear on everything from smartphones and tablets to internet-connected toys and games), it might be beneficial to limit the time children spend on digital devices to curb their exposure to digital advertising.

Meet Our Expert

Carly Page is an experienced technology writer with more than 10 years in the industry. Previously the editor of tech tabloid The Inquirer, she is now a freelance technology journalist, editor and consultant who writes for Forbes, TechRadar and Wired, among others.



Source: See full reference list on guide page at: <https://nationalcollege.com/guides/pop-ups>

ParentPay

ParentPay enables parents/carers to make secure payments for their child's lunches and school trips.

ParentPay Activation

When pupils join Hodge Hill College, parents/carers are issued with a ParentPay Activation Letter that contains a temporary ParentPay username and password. As part of the account activation, the parent/carer will need to choose an email address and new password to use with ParentPay. Parents/carers should follow the instructions in the letter, and on www.parentpay.com to successfully activate their account. If you have more than one child at our school or have children in other schools that use ParentPay, you can create a single account to manage them all.

Forgotten Password

If a parent/carer can't get into their ParentPay account, they should go to www.parentpay.com > For Parents > Parent Login, and click on the "Forgotten password" link. Parents/carers should not need to contact school to regain access to ParentPay accounts.

Outstanding Balances

If you have an unpaid balance on your child's ParentPay account, we kindly request you to settle it as soon as possible by logging into your account.

If you need help with adding credit to the account, please visit the School Office with your debit card.

FAQs & More Information

- FAQs: www.hodgehill.bham.sch.uk/parentpay
- More information: www.parentpay.com
- Call the School Office: 0121 783 7807

Free School Meals

Who is eligible for Free School Meals?

Your child may be able to get free school meals if you get any of the following:

- Income Support
- income-based Jobseeker's Allowance
- income-related Employment and Support Allowance
- support under Part VI of the Immigration and Asylum Act 1999
- the guaranteed element of Pension Credit
- Child Tax Credit (provided you're not also entitled to Working Tax Credit and have an annual gross income of no more than £16,190)
- Working Tax Credit run-on - paid for 4 weeks after you stop qualifying for Working Tax Credit
- Universal Credit - if you apply on or after 1 April 2018 your household income must be less than £7,400 a year (after tax and not including any benefits you get)

Apply for Free School Meals

We encourage you to apply for Free School Meals through the online service found on our website: www.hodgehill.bham.sch.uk/freeschoolmeals. You can also telephone (0121 783 7807) or come into school and complete a Free School Meals application online with a member of staff if you prefer.

Please make sure you have the National Insurance Number with you for the named person who receives either working tax credit/child tax credit and we will be happy to help.

Weekly Lunch Menu

The school lunch menus are available to view online and provide an overview of the menu items that will be served each day: <https://www.hodgehill.bham.sch.uk/lunch>.



Responsibly sourced,
Safe British Produce,
Good Animal Welfare.



Organic Product Suppliers



Healthy Food
Fresh Ingredients
75% freshly prepared



Highest Standards in UK
Egg Production



Wild fish or Seafood from
Sustainable Fishing



FAIRTRADE Sourced Ingredients



Sustainably Farmed Products

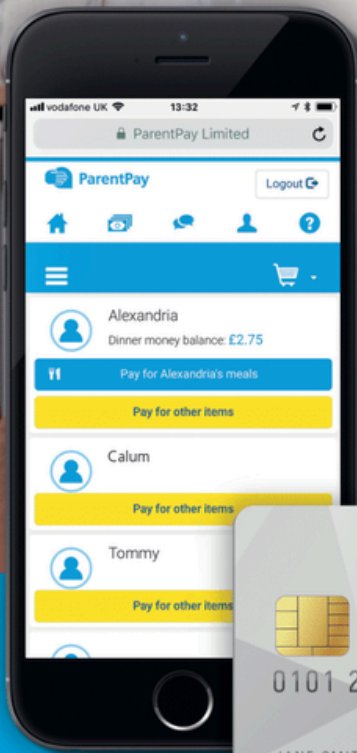


Commitment to ongoing
environmental improvement.

THE EASY WAY TO PAY

We're using ParentPay so parents can easily pay online for school dinners, trips and clubs.

No stress, hassle free.



**SIMPLE
QUICK
SAFE**



www.parentpay.com



ParentPay
COUNT ON US

VISA

VISA Checkout



Food Bank Donations Welcome



The graphic features the Hodge Hill College logo at the top, followed by the text 'HODGE HILL COLLEGE' in a spaced-out font, and 'FOOD BANK Donations Welcome' in large, bold letters. Below this, it states: 'At Hodge Hill College, we have established a food bank specifically for the families of our pupils in light of rising food prices and the cost of living. We welcome the following donations: Pasta | Rice | Cereal | Soup | Tinned Vegetables | Tinned Fruit | Tinned Fish'. At the bottom, there is an illustration of various food items including cans of Baked Beans, Kidney Beans, Sweet Corn, Tomato Soup, and Macaroni, along with a jar of Pineapple Slices and a container of Pineapple.

Our Community and the Cost of Living

Now more than ever, with the rising cost of living, many families are feeling the squeeze. As a school, we are actively seeking to do whatever we reasonably can to support our students and their families with these rapidly growing pressures.

We are continuing to open West Canteen to pupils every morning before school between 8:00am and 8:30am to provide a free breakfast including toast and hot drinks. Please encourage your child to attend this, particularly if they arrive early to school in the morning, as it is a supervised space with access to games and other activities.

If you are facing particular hardships, please feel free to get in touch with us here at Hodge Hill College at householdsupport@hodgehill.bham.sch.uk. All requests will be treated with the utmost confidentiality and we will look at what support we are able to practically provide. Previous support has included supermarket vouchers, new uniform, school shoes and PE kit.

Further information about support being provided by Birmingham City Council for the cost of living crisis can be found on <https://www.birmingham.gov.uk/livingsupport> and this may be of use to you in signposting where you can get help, support, and advice if you are affected.

We have a second-hand store of pre-loved uniform items, all washed and ready if you need them. Please get in touch with the school at the email address above if you would like to take advantage of this.

Help in Brum - Cost of Living Crisis

The cost of living crisis is impacting people across Birmingham and we know this is a worrying time for many families. On each page of [this](#) booklet, you'll find useful organisations that can offer support if you are affected by the increased costs of living.

Uniform Donations

Throughout the year, we kindly request your help in supporting other families in need. If your children have outgrown their old school uniforms, please consider donating them to the School Office. We will collect all donated uniforms and distribute them to students who would greatly benefit from them. Even a single donated item can make a significant difference.

Please make sure to wash the uniforms before donating and ensure they are in good condition. You can send the uniforms with your child or drop them off at the School Office yourself. We appreciate anything you can provide to help clothe and equip students whose families are facing financial difficulties.

Together, we can ensure that all our students feel comfortable, confident, and ready to learn.

H O D G E H I L L C O L L E G E
FOOD BANK

Every Friday from 1:30pm to 3:00pm in the Studio

At Hodge Hill College, we have established a food bank specifically for the families of our pupils in light of rising food prices and the cost of living.

We have the following items available:

Pasta | Rice | Cereal | Soup
Tinned Vegetables | Tinned Fruit | Tinned Fish

CLICK BELOW TO REGISTER YOUR INTEREST

<https://bit.ly/3Uxzi4X>



Translate Our School Website Using Google Translator on Chrome

If you need help understanding information on our school's website, Google Chrome has a built-in translation feature that can translate the pages into your preferred language.

To use this, first make sure you have the latest version of Google Chrome installed on your device. Then navigate to our school's website and click on the three-dot menu icon in the top right corner of Chrome. Select "Translate" from the menu. This will bring up a sidebar where you can choose which language you want to translate the page into. Click on your desired language and Chrome will automatically translate everything on the webpage.

The translation may not be completely perfect, but it should help convey the key information and allow you to understand important updates from teachers or the school administration.

This feature works for dozens of popular languages - just select the one you feel most comfortable with.

Examples:

Arabic



Bangla



Chinese



Romanian



Polish



Urdu



Homework - Useful Links



[SAM Learning](#)



[ClassCharts](#)



[MathsWatch](#)



[My GCSE Science](#)



[myON](#)



B.Y.O.B

BRING YOUR OWN BOTTLE

As part of our move towards sustainability,
single-use plastic cups are no longer
available in school.

All pupils must take responsibility for
bringing in their own reusable water bottle.

Detentions

Hodge Hill College operates a detention system. If your child is late, misbehaves or doesn't hand in their homework on time, they will be given detention at lunchtime or up to 30 minutes at the end of the day. You will usually get a text or an in-app message on MyEd to inform you. Please ensure your contact details are up to date. For more serious matters, staff can issue an hour's detentions after school without giving parents/carers notice.

What the Law Allows

- Teachers have the power to issue detention to students (aged under 18)
- Schools must make clear to students and parents/carers that they use detention (including detention outside of school hours) as a sanction
- The times outside normal school hours when detention can be given (the 'permitted day of detention') include:
 - any school day where the student does not have permission to be absent
 - weekends - except the weekend preceding or following the half-term break
 - non-teaching days – usually referred to as 'training days', 'INSET days' or 'non-contact days'
- Parental consent is not required for detentions
- As with any disciplinary penalty, a member of staff must act reasonably given all the circumstances

The Government's summary on behaviour and discipline in schools can be read online at: <https://bit.ly/39yoRFb>.

Uniform & Standards

As part of the school's continued drive to improve standards, we would like all pupils to consistently adhere to the expectations on appearance, conduct and equipment. We are a professional environment and as such, we need all pupils to look smart, professionally conduct themselves and come equipped for their learning.

If a pupil does not meet the standards consistently, they will sit a 30-minute detention. We must have your support to raise our standards collectively. Please can we remind you that pupils are not permitted to wear nose studs and patterns and lines are not to be shaved into hairstyles or eyebrows.

If there are any problems in acquiring uniform, please contact the school and we will endeavour to work with you to address these issues. Such cases will be treated with due sensitivity and confidence.

Our full school uniform and PE kit list can be found at <https://www.hodgehill.bham.sch.uk/uniform>.

Year 11 After-school Tuition

We have introduced a comprehensive new tuition model to support Year 11 pupils' academic progress. Pupils requiring additional help are identified early through mock exams and subject-led assessments.

Teachers use focused tuition sessions to provide targeted support in small groups. There are dedicated after-school sessions each week for Maths, English, Science, and other core subjects. Those making significant progress can move out of the tuition program, while those who require further support may receive more intensive interventions with subject specialist teachers.

This multi-layered approach aims to collect and utilise data effectively, allowing teachers to adapt and personalise tuition to meet individual pupils' needs throughout the academic year.

This tuition timetable is available at <https://www.hodgehill.bham.sch.uk/tuition>.

Extra-curricular Activities & Clubs

At Hodge Hill College, our enrichment and extra-curricular provision provides our pupils with a breadth and balance of activities designed to broad their horizons, allowing them to develop their own interests and talents. The programme is an extension of the school's curriculum and builds on our CARE brand whilst instilling British Values.

We offer quality provision which provides our pupils with a number of opportunities to develop their resilience, character and performance. Our sports provision has continued to improve to develop pupils physically and mentally.

Please note, that all pupils must sign in at reception upon arrival for before-school sessions each morning.

For more information and the activities timetable, please visit: <https://www.hodgehill.bham.sch.uk/extracurricular>.

