

# Weekly Bulletin

3 June 2024 - 7 June 2024

Important Dates	
7 May-18 June	<u>BTEC/GCSE Exams</u>
28 June	New Year 9 HPV Immunisation Catch-ups
3 July	Year 6 Induction Day & Welcome Event
5 July	Staff Training Day (School Closed to Pupils)
8 July-18 July	Year 10 Work Experience
19 July	Year 10 Work Experience - Debrief & End of Summer Term
22 August	GCSE Results Day
2 September	Start of Autumn Term & Staff Training Day (School Closed to Pupils)
3 September	Year 7 & 11 Start School
4 September	Year 8, 9 & 10 Start School
18 September	Year 7-11 Flu Immunisations

## Learning Wallets, School Bags & Equipment

All pupils have been given a learning wallet containing the equipment they need to bring to school to support their access to the curriculum. This needs to be brought into school every day in a school bag to ensure it is kept safe. Pupils without a bag have been provided with one. Failure to bring in the learning wallet or school bag will result in a 60-minute detention.

If pupils lose any of their equipment, they are responsible for replacing it. Stationery items are available for purchase at both canteens for a nominal amount of 10p per item (cash). If your child is in Years 8-10 and needs to replace their calculator, you can either provide one or purchase a new one through ParentPay/the School Office for £15 (cashless). If your child is in Year 11, they can obtain one from Mrs Millington.

## Term Time Leave of Absence Requests

We understand there may be occasions when parents wish to take their children out of school during term time for various reasons. However, attendance is a national priority and the school can only authorise absence in limited, exceptional circumstances such as a death in the family, life-threatening illness, or armed forces leave.

Requests must be made in advance, providing all relevant reasons and information. The decision ultimately lies with the Headteacher based on DfE guidance. If a child's attendance is below 96% or they are persistently absent (below 90%), leave is extremely unlikely to be authorised.

Unauthorised absences meeting the criteria will be referred to the Attendance & Prosecution Service, potentially resulting in a penalty notice fine. The school aims to work proactively with parents to encourage good attendance.

For more information, please read <https://bit.ly/3R39VoQ>.

## Useful Links



[Hodge Hill College](#)



[ParentPay](#)



[MyEd](#)



[Birmingham City Council](#)

# MY Ed

Connecting parents, students and schools



## Download our school app NOW

Step 1: Go to your app store

1



Step 2: Search for My Ed

2



Step 3: Download the app

3

**FREE**  
Download

## Information about your student and school direct into your pocket.

95%

### Attendance

Keep up to date with your child's attendance details.



### Forms

Fill in forms securely on your app and return them directly to school.



### Timetables

Get regular updates on timetables.



### Key Dates

Important dates the school needs you to know.



### News

Access the latest school news.



### Info Packs

Digital information packs reduces time, hassle & paper.



**GET THE APP HERE**

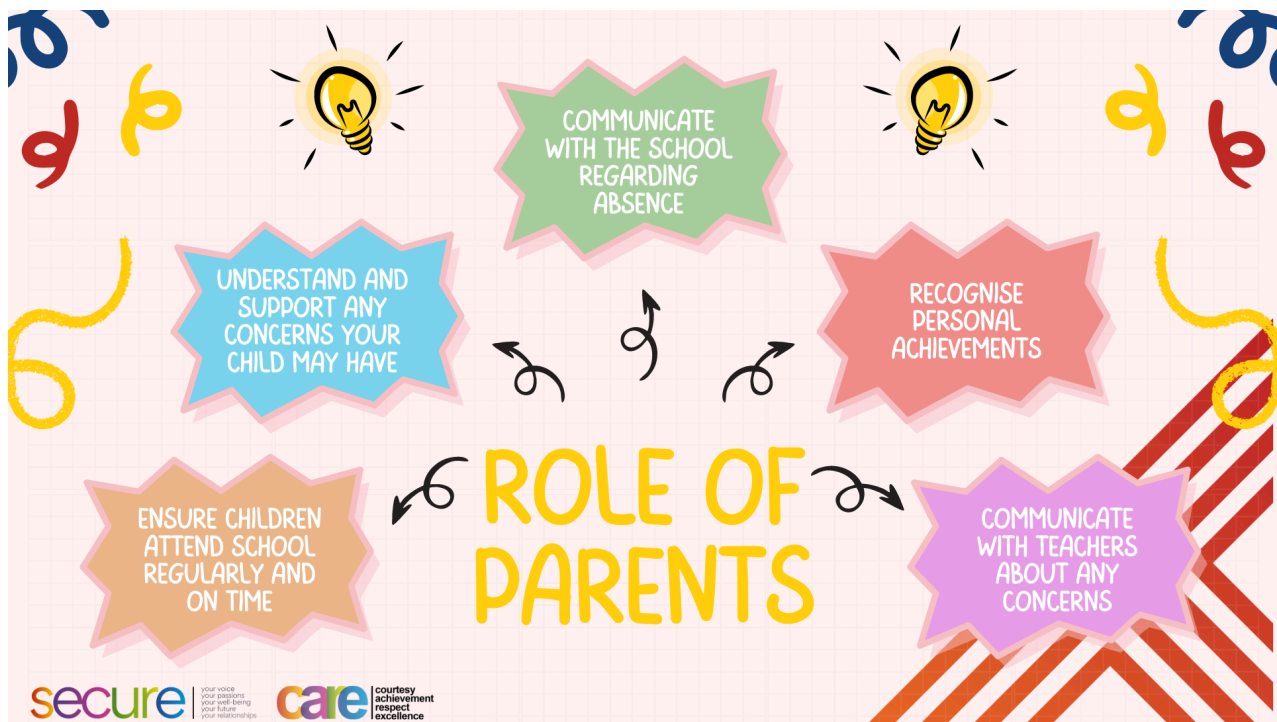
SCAN ME



Find out more

[www.myedschoolapp.com](http://www.myedschoolapp.com)

## Role of Parents



Your role in your child's education is invaluable, and there are several key ways you can contribute to their success:

- Communicate with the school regarding any absences to ensure your child's attendance is properly accounted for and they don't fall behind
- Understand and support any concerns or challenges your child may be facing, whether academic, social, or emotional. Be patient, listen to them, and work together to find solutions
- Recognise and celebrate your child's personal achievements, no matter how big or small. This will boost their confidence and motivate them to continue striving for excellence
- Ensure your child attends school regularly and arrives on time. Consistent attendance is crucial for their academic progress and developing good habits.
- Communicate openly with your child's teachers about any concerns or issues you may have. A collaborative approach with open dialogue is essential for addressing challenges effectively

By being actively involved in these ways, you create a strong support system for your child's educational journey. Remember, your encouragement and involvement play a vital role in shaping their attitudes towards learning and their overall development. Let's work together to provide the best possible educational experience for our children.

### Aladdin Junior - Request for Items to Borrow or Donate

The Hodge Hill Theatre Workshop is excited to present Disney's Aladdin Junior on 4 July 2024. To bring this magical production to life, we are seeking the following items that could be borrowed or donated:

- A throne suitable for a royal palace
- 10-12 meters of gold, pink, blue, or green fabric/material
- An authentic-looking genie's lamp but not of significant value
- Costume jewellery or fake jewels you no longer need

If you have any of these items available to lend or donate, please contact the School Office. Your contributions will help make our show truly sparkle and shine. We appreciate any assistance from our community in making this production a magnificent experience for all involved.

### Important Reminder: Changes to School Day Timings from September 2024

We are committed to providing the best educational experience for our pupils. With this in mind, we would like to gently remind you of some changes to the school day timings that will take effect from September 2024. The Department for Education has set a new minimum expectation of a 32.5-hour school week. To meet this requirement, Hodge Hill College will return to our pre-Covid start and finish times, as follows: <https://bit.ly/3Uj11Vb>.

# 10 Top Tips for Parents and Educators

## ENCOURAGING HEALTHY FRIENDSHIPS

Navigating the complexities of childhood and adolescent friendships can be challenging – but with the right guidance, children and young people can cultivate meaningful, supportive relationships, some of which may last for many years. These top tips provide a comprehensive approach to fostering healthy friendships among children and young people. It's important to remember, however, that each child is different, and will require an individual approach to relationship support.

### 1 GRANT FRIENDSHIP OPPORTUNITIES

Encouraging children and young people to join extracurricular activities can foster healthy friendships by providing shared interests and common ground. Engaging in these pastimes offers a platform for interaction, sometimes alleviating the social pressure of knowing what to say, and helps children develop meaningful connections.

### 2 LEAD BY EXAMPLE

The children and young people in our lives see how we behave, the connections that we've made and the interactions between us and others. When we model healthy friendships, we set an example and help youngsters to understand what healthy friendships looks like and how to navigate them.

### 3 HELP THEM LOVE THEMSELVES

Healthy friendships aren't just about dynamics with other people. They're about our relationship with ourselves. For overall wellbeing, it's important for a child to have the space to build their self-esteem and a positive self-image, as these factors can have a notable influence on the friendships they form throughout life.

### 4 MONITOR SCREEN TIME

Too much screen time can affect some children's wellbeing in general, but it can specifically impact friendships if it results in fewer positive social interactions. In some cases, reducing screen time and encouraging children and young people to find ways to interact face-to-face can have positive results. It's also important to remember that young people can make positive friendships online, but they will require support to do this safely.

### 5 TEACH PROBLEM-SOLVING

Inevitably, friendships can run into problems. However, this is also an opportunity to support children and young people to work through any difficulties that may arise. It can be tempting to intervene and try to fix these issues for those involved, but helping them consider ways of resolving conflict or managing difficult situations for themselves can help them create stronger friendships.

### 6 EMPOWER THE CHILD

When we give children and young people the confidence to choose their friends, navigate interpersonal boundaries and consider how they want to interact with the different people around them, we empower them to take control of the friendships they have. When young people feel in control of these things, they're more likely to make positive choices and remain aware of the signs of a negative relationship.

### 7 TEACH EMPATHY

'Healthy friendships' doesn't always mean 'perfect.' Sometimes, disagreements can happen. When we teach children and young people to have empathy, we help them to see both sides of a relationship; to be mindful of the challenges a friend might be facing or whatever else might be going on. This can help children and young people to build stronger friendships.

### 8 BE OPEN TO QUESTIONS

Talking to young people about their friendships, who they spend time with and who they interact with can open the door to questions if they have concerns. Initially, these queries may be straightforward, but if we are receptive to discussion from the outset, young people are more likely to come to us for help when they are older as well.

### 9 UNDERSTAND BOUNDARIES

One of the keys to a healthy friendship is honouring boundaries. This can include anything from respecting personal space and belongings to acceptable language and behaviour. Understanding the importance of setting these limits and upholding those set by others can help children stay safe. If young people figure out their boundaries and feel comfortable enforcing them, they're more likely to call someone out if they go too far.

### 10 SPOT THE SIGNS

We can't always supervise young people: sometimes, we need to step back and give them some space. However, it's important to consider any indicators that they may be struggling in their friendships. Are they becoming increasingly irritable? Does their behaviour alter when they've been with their friends? Are they becoming withdrawn or reluctant to take part in certain activities? These could all be signs that they're finding things difficult, and we should remain alert to such changes.

## Meet Our Expert

Becky Dawson is an experienced educator who has worked in primary and secondary schools for 20 years. She is a facilitator, consultant and coach working with young people and the adults who work with them, with a focus on developing understanding and skills around mental health, wellbeing and safeguarding.



#WakeUpWednesday®

The National College®

## **Year 11 BTEC/GCSE Examinations**

Year 11 BTEC/GCSE examinations commenced on 7 May 2024. The full timetable is available to view at <https://www.hodgehill.bham.sch.uk/exams>.

## **Zero Tolerance**

Please note that Hodge Hill College operates a zero-tolerance policy about verbal and physical aggression.

If you become abusive towards a member of staff, we will need to:

- Close down any conversation and not speak with you any further
- Ask you to leave and come back another time
- If necessary, call the police for assistance

Please be respectful of our staff in the School Office team. They will do their best to help you but in a large school with several buildings, over 150 members of staff, and approximately 1200 pupils, they may not always be able to find out what you want to know or locate a member of staff immediately, so please be patient.

## **Is my child too ill for school?**

We know that, at certain times of the year, children pick up bugs and illnesses. However, please remember that children can come to school with some illnesses if they feel well enough. NHS guidance is available at <http://bit.ly/3hD7ryQ>.

## **Medical Appointments During the School Day**

In order to ensure that your child's learning is not disrupted, it is strongly recommended that non-urgent GP, dentist, or optometrist appointments are scheduled outside of school hours.

If your child has a hospital appointment or requires specialist medical care, please inform the school in advance. You can do so by sending a photo of the appointment letter via MyEd or by submitting it in person to the School Office. A copy of the letter will then be sent to your child's AC and AAC to authorise the absence.

## **Medication**

As a parent or carer, it is your responsibility to provide the school with accurate and updated information regarding your child's medical needs. You should also be involved in developing and reviewing your child's individual healthcare plan.

If your child has any medical needs or needs to take medication during school hours, please visit the School Office to complete a Parental Medical Consent Form and drop off any medication that needs to be kept in school.

If your child has asthma, we highly recommend that they always carry an inhaler with them. Please provide us with an inhaler by dropping it off at the School Office in case of any emergencies, and completing the consent form.

## **Contact Details**

Please remember to inform the school of any changes to your contact details. This is important because we may need to contact you if your child is injured or taken ill, to provide you with information about trips and closures or to send you reminders and cancellations of any event. Please update and submit any new details via the Change of Pupils Details Form on the MyEd app. Alternatively, you may visit the School Office to complete an electronic/paper copy of the form.

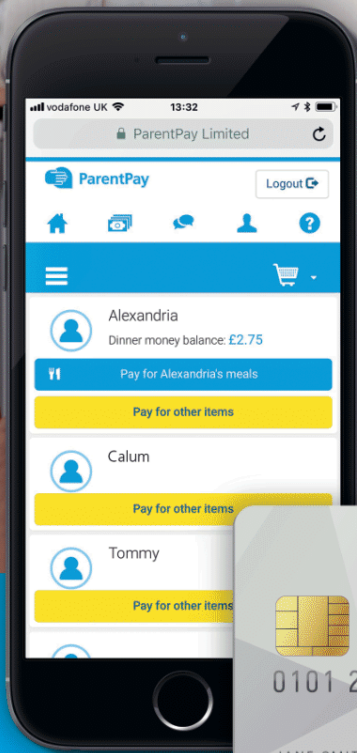
## **Confiscated Items**

If a pupil has an item confiscated, their parents/carers can pick it up from the School Office after school on the same day. If they cannot collect it on the same day, the parent/carers must pick it up on another day after school. Pupils are not permitted to collect the item.

# THE EASY WAY TO PAY

We're using ParentPay so parents can easily pay online for school dinners, trips and clubs.

**No stress, hassle free.**



**SIMPLE  
QUICK  
SAFE**



[www.parentpay.com](http://www.parentpay.com)



**ParentPay**  
COUNT ON US

**VISA**

**VISA Checkout**



## ParentPay

ParentPay enables parents/carers to make secure payments for their child's lunches and school trips.

### ParentPay Activation

When pupils join Hodge Hill College, parents/carers are issued with a ParentPay Activation Letter that contains a temporary ParentPay username and password. As part of the account activation, the parent/carer will need to choose an email address and new password to use with ParentPay. Parents/carers should follow the instructions in the letter, and on [www.parentpay.com](http://www.parentpay.com) to successfully activate their account. If you have more than one child at our school or have children in other schools that use ParentPay, you can create a single account to manage them all.

### Forgotten Password

If a parent/carer can't get into their ParentPay account, they should go to [www.parentpay.com](http://www.parentpay.com) > For Parents > Parent Login, and click on the "Forgotten password" link. Parents/carers should not need to contact school to regain access to ParentPay accounts.

### Outstanding Balances

If you have an unpaid balance on your child's ParentPay account, we kindly request you to settle it as soon as possible by logging into your account.

If you need help with adding credit to the account, please visit the School Office with your debit card.

### FAQs & More Information

- FAQs: [www.hodgehill.bham.sch.uk/parentpay](http://www.hodgehill.bham.sch.uk/parentpay)
- More information: [www.parentpay.com](http://www.parentpay.com)
- Call the School Office: 0121 783 7807

## Free School Meals

### Who is eligible for Free School Meals?

Your child may be able to get free school meals if you get any of the following:

- Income Support
- income-based Jobseeker's Allowance
- income-related Employment and Support Allowance
- support under Part VI of the Immigration and Asylum Act 1999
- the guaranteed element of Pension Credit
- Child Tax Credit (provided you're not also entitled to Working Tax Credit and have an annual gross income of no more than £16,190)
- Working Tax Credit run-on - paid for 4 weeks after you stop qualifying for Working Tax Credit
- Universal Credit - if you apply on or after 1 April 2018 your household income must be less than £7,400 a year (after tax and not including any benefits you get)

### Apply for Free School Meals

We encourage you to apply for Free School Meals through the online service found on our website: [www.hodgehill.bham.sch.uk/freeschoolmeals](http://www.hodgehill.bham.sch.uk/freeschoolmeals). You can also telephone (0121 783 7807) or come into school and complete a Free School Meals application online with a member of staff if you prefer.

Please make sure you have the National Insurance Number with you for the named person who receives either working tax credit/child tax credit and we will be happy to help.

## Weekly Lunch Menu

The school lunch menus are available to view online and provide an overview of the menu items that will be served each day: <https://www.hodgehill.bham.sch.uk/lunch>.



Responsibly sourced,  
Safe British Produce,  
Good Animal Welfare.



Organic Product Suppliers



Healthy Food  
Fresh Ingredients  
75% freshly prepared



Highest Standards in UK  
Egg Production



Wild fish or Seafood from  
Sustainable Fishing



FAIRTRADE Sourced Ingredients



Sustainably Farmed Products



Commitment to ongoing  
environmental improvement.

H O D G E H I L L C O L L E G E  
**FOOD BANK**

**Every Friday from 1:30pm to 3:00pm in the Studio**

At Hodge Hill College, we have established a food bank specifically for the families of our pupils in light of rising food prices and the cost of living.

We have the following items available:

Pasta | Rice | Cereal | Soup  
Tinned Vegetables | Tinned Fruit | Tinned Fish

**CLICK BELOW TO REGISTER YOUR INTEREST**

**<https://bit.ly/3Uxzi4X>**



## Food Bank Donations Welcome



# HODGE HILL COLLEGE FOOD BANK Donations Welcome

At Hodge Hill College, we have established a food bank specifically for the families of our pupils in light of rising food prices and the cost of living. We welcome the following donations:

Pasta | Rice | Cereal | Soup | Tinned Vegetables | Tinned Fruit | Tinned Fish



### Our Community and the Cost of Living

Now more than ever, with the rising cost of living, many families are feeling the squeeze. As a school, we are actively seeking to do whatever we reasonably can to support our students and their families with these rapidly growing pressures.

We are continuing to open West Canteen to pupils every morning before school between 8:00am and 8:30am to provide a free breakfast including toast and hot drinks. Please encourage your child to attend this, particularly if they arrive early to school in the morning, as it is a supervised space with access to games and other activities.

If you are facing particular hardships, please feel free to get in touch with us here at Hodge Hill College at [householdsupport@hodgehill.bham.sch.uk](mailto:householdsupport@hodgehill.bham.sch.uk). All requests will be treated with the utmost confidentiality and we will look at what support we are able to practically provide. Previous support has included supermarket vouchers, new uniform, school shoes and PE kit.

Further information about support being provided by Birmingham City Council for the cost of living crisis can be found on <https://www.birmingham.gov.uk/livingsupport> and this may be of use to you in signposting where you can get help, support, and advice if you are affected.

We have a second-hand store of pre-loved uniform items, all washed and ready if you need them. Please get in touch with the school at the email address above if you would like to take advantage of this.

### Help in Brum - Cost of Living Crisis

The cost of living crisis is impacting people across Birmingham and we know this is a worrying time for many families. On each page of [this](#) booklet, you'll find useful organisations that can offer support if you are affected by the increased costs of living.

### Uniform Donations

Throughout the year, we kindly request your help in supporting other families in need. If your children have outgrown their old school uniforms, please consider donating them to the School Office. We will collect all donated uniforms and distribute them to students who would greatly benefit from them. Even a single donated item can make a significant difference.

Please make sure to wash the uniforms before donating and ensure they are in good condition. You can send the uniforms with your child or drop them off at the School Office yourself. We appreciate anything you can provide to help clothe and equip students whose families are facing financial difficulties.

Together, we can ensure that all our students feel comfortable, confident, and ready to learn.



# B.Y.O.B

BRING YOUR OWN BOTTLE

As part of our move towards sustainability,  
single-use plastic cups are no longer  
available in school.

All pupils must take responsibility for  
bringing in their own reusable water bottle.

## Translate Our School Website Using Google Translator on Chrome

If you need help understanding information on our school's website, Google Chrome has a built-in translation feature that can translate the pages into your preferred language.

To use this, first make sure you have the latest version of Google Chrome installed on your device. Then navigate to our school's website and click on the three-dot menu icon in the top right corner of Chrome. Select "Translate" from the menu. This will bring up a sidebar where you can choose which language you want to translate the page into. Click on your desired language and Chrome will automatically translate everything on the webpage.

The translation may not be completely perfect, but it should help convey the key information and allow you to understand important updates from teachers or the school administration.

This feature works for dozens of popular languages - just select the one you feel most comfortable with.

### Examples:

#### Arabic



#### Bangla



#### Chinese



#### Romanian



#### Polish



#### Urdu



### Homework - Useful Links



[SAM Learning](#)



[ClassCharts](#)



[MathsWatch](#)



[My GCSE Science](#)



[myON](#)

# What to do:

Your child  
can go to  
school

Other  
children are  
at risk

Your child  
cannot go  
to school

What's it called?	What is it like?	Can my child go to school?	Getting Treatment	More Advice
Athlete's foot	White patches between toes		Pharmacy	Child should not be barefoot at school or share towels and socks or shoes
Chicken pox	Rash begins as small, red, flat spots that develop into itchy fluid-filled blisters		Pharmacy	Return to school at least 5 days from the onset of the rash and until all blisters have crusted over.
Cold sores	Fluid blister on mouth, then dries up and crusts over		Pharmacy	Avoid contact with sores
Common cold	Runny nose, sneezing, sore throat		Pharmacy	Encourage child to wash hands and use tissues and bin once used.
Conjunctivitis	Tearry, red, itchy, painful eye(s)		Pharmacy	Try not to touch eye to avoid spreading
COVID-19	Runny nose, headache, coughing, loss or change in smell or taste		Pharmacy	Child who has a positive test result should not attend school for 3 days after the day of the test
Diarrhoea and vomiting	Stomach cramps, nausea, vomiting and diarrhoea		Pharmacy	Don't send child to school until 48 hours after diarrhoea and vomiting has stopped.
Flu (influenza)	Fever, cough, sneezing, runny nose, headache, body aches and pains, exhaustion, sore throat		Pharmacy	Encourage child to wash hands and use tissues and bin once used.
Hand foot and mouth	Fever, sore throat, small painful blisters inside the mouth on tongue and gums (may appear on hands and feet)		GP or 111	Only need to stay off if feeling too unwell to attend
Head lice	Itchy scalp		Pharmacy	
Impetigo	Cluster of red bumps or blisters surround by are of redness		GP or 111	Return to school when lesions crust or 48 hours after start of antibiotics.
Measles	Fever, cough, runny nose and watery inflamed eyes. Small red spots with white or white centers in the mouth, red blotchy rash		GP or 111	Back to school 4 days from onset of rash and well enough
Meningitis	Fever, headache, light sensitive, neck stiffness, vomiting sleepy		GP or 111	Only need to stay off if feeling too unwell to attend. If you are worried contact GP, 111 or 999
Mumps	Swelling and tenderness of salivary gland, pain		GP or 111	Child can return 5 days after start of swelling and if well enough.
Ringworm	Red ring-shaped rash, may be itchy, dry, scaly or wet and crusty		GP or 111	
Scabies	Intense itching, pimple-like rash, itching all over the body but commonly between fingers, wrists, elbows and arms		GP or 111	Back to school after first treatment
Scarlet fever	Fever, sore throat, rash pinhead in size and skin a sandpaper-like texture		GP or 111	Child can return 24 hours after start of antibiotics
Slapped cheek	Fever, runny nose, red rash to one or both cheeks and a spotty rash will appear		Pharmacy	
Threadworms	Intense itchiness around anus		Pharmacy	Encourage child to wash hands
Tonsillitis	Intense sore throat		Pharmacy	See GP if child had temperature lasting over 48 hours or can't swallow.
Warts and verrucae	Small lump on skin. Verrucae has black patch under skin		Pharmacy	Verrucae should be covered in swimming pools, gyms and changing rooms.
TB	Night sweats, weight loss, fever, loss appetite, pain to joints		GP	TB team will inform when child can return.

## Detentions

Hodge Hill College operates a detention system. If your child is late, misbehaves or doesn't hand in their homework on time, they will be given detention at lunchtime or up to 30 minutes at the end of the day. You will usually get a text or an in-app message on MyEd to inform you. Please ensure your contact details are up to date. For more serious matters, staff can issue an hour's detentions after school without giving parents/carers notice.

### What the Law Allows

- Teachers have the power to issue detention to students (aged under 18)
- Schools must make clear to students and parents/carers that they use detention (including detention outside of school hours) as a sanction
- The times outside normal school hours when detention can be given (the 'permitted day of detention') include:
  - any school day where the student does not have permission to be absent
  - weekends - except the weekend preceding or following the half-term break
  - non-teaching days – usually referred to as 'training days', 'INSET days' or 'non-contact days'
- Parental consent is not required for detentions
- As with any disciplinary penalty, a member of staff must act reasonably given all the circumstances

The Government's summary on behaviour and discipline in schools can be read online at: <https://bit.ly/39yoRFb>.

## Uniform & Standards

As part of the school's continued drive to improve standards, we would like all pupils to consistently adhere to the expectations on appearance, conduct and equipment. We are a professional environment and as such, we need all pupils to look smart, professionally conduct themselves and come equipped for their learning.

If a pupil does not meet the standards consistently, they will sit a 30-minute detention. We must have your support to raise our standards collectively. Please can we remind you that pupils are not permitted to wear nose studs and patterns and lines are not to be shaved into hairstyles or eyebrows.

If there are any problems in acquiring uniform, please contact the school and we will endeavour to work with you to address these issues. Such cases will be treated with due sensitivity and confidence.

Our full school uniform and PE kit list can be found at <https://www.hodgehill.bham.sch.uk/uniform>.

## Year 11 After-school Tuition

We have introduced a comprehensive new tuition model to support Year 11 pupils' academic progress. Pupils requiring additional help are identified early through mock exams and subject-led assessments.

Teachers use focused tuition sessions to provide targeted support in small groups. There are dedicated after-school sessions each week for Maths, English, Science, and other core subjects. Those making significant progress can move out of the tuition program, while those who require further support may receive more intensive interventions with subject specialist teachers.

This multi-layered approach aims to collect and utilise data effectively, allowing teachers to adapt and personalise tuition to meet individual pupils' needs throughout the academic year.

This tuition timetable is available at <https://www.hodgehill.bham.sch.uk/tuition>.

## Extra-curricular Activities & Clubs

At Hodge Hill College, our enrichment and extra-curricular provision provides our pupils with a breadth and balance of activities designed to broad their horizons, allowing them to develop their own interests and talents. The programme is an extension of the school's curriculum and builds on our CARE brand whilst instilling British Values.

We offer quality provision which provides our pupils with a number of opportunities to develop their resilience, character and performance. Our sports provision has continued to improve to develop pupils physically and mentally.

**Please note, that all pupils must sign in at reception upon arrival for before-school sessions each morning.**

For more information and the activities timetable, please visit: <https://www.hodgehill.bham.sch.uk/extracurricular>.

